

# DOWNLIGHT SERIES

SLIM CANLESS SWIVEL DOWNLIGHT



## INSTALLATION MANUAL

PRODUCT PARAMETER	
INPUT VOLTAGE	120V
DIMMING	TRIAC
MATERIAL	DIE-CAST METAL



### PRE - INSTALLATION

Please read and understand all instructions before operate or install the product. Failure to do so may lead to electric shock, fire or other injuries that could be hazardous or even fatal.

- Shut off the electricity to the wires that you are working on
- Do NOT open, no user serviceable parts inside. Any changes or modifications and applications not expressly approved by the manufacturer could void the user's authority to operate the equipment and warranty

### SAFETY INFORMATION

**BE SURE THE POWER IS OFF! RISK OF ELECTRICAL SHOCK:** Always use the switch to power off. Do not perform any operations while this unit is powered on. The electrical system you want to connect the device to must be grounded. Read the instructions before using or powering this device. The safety instructions must remain with the unit in case of transfer. Any damage to the device linked to an inappropriate use is excluded from support by the warranty. Before connecting, make sure that the current and voltage are compatible with this device. We highly recommend that all installations are made by QUALIFIED ELECTRICIAN. We are NOT responsible by any means for the use or misuse of the following information. We are NOT responsible in whole or part for any harm or damage that may or may not be caused. We reserve the right to revise the components of any product, due to part availability or change ETL, CUL, UL standards without assuming any obligation or liability to modify any products previously manufactured and without notice. These instructions do not cover all details of variations in equipment, nor do they provide every possible contingency to be met. Turn off / unplug power when installing or service device.

### WARNING

**WARNING:** Read all safety precautions and installation instructions carefully before installing or servicing this fixture. Failure to comply with these instructions could result in a potentially fatal electric shock, fire, and/or property damage.

- Risk of fire or electrical shock
- LED retrofit kit installation requires knowledge of luminaires electrical systems. Do NOT attempt installation if not qualified. Contact a qualified electrician
- Install this kit only in the luminaires that have the construction features and dimensions shown in the photographs and/or drawings
- Do NOT exceed the input rating of the luminaire
- Do NOT make or alter any open holes in an enclosure of wiring or electrical components during installation
- To prevent wiring damage or abrasion, do NOT expose wiring to edges of sheet metal or other sharp objects
- This device is not intended for use with emergency exits
- This luminaire has been modified to operation LED lamp. Do NOT attempt to install or operate incandescent lamps or CFL in this luminaire
- This retrofit kit is accepted as a component of a luminaire where the suitability of the combination shall be determined by authorities having jurisdiction

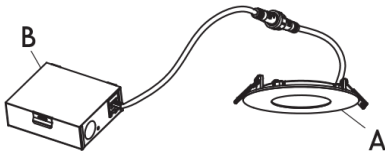
### CAUTION

- Connect fixture to a 120 Volt, 60 Hz power source only. Any other connection void the warranty
- This device complies with Part 15 of the FCC Rules. Operation is subject to the following two conditions: (1) This device may not cause harmful interference, and (2) this device must accept any interference received, including interference that may cause undesired operation. This equipment has been tested and found to comply with the limits for a Class B digital device, pursuant to part 15 of the FCC Rules. These limits are designed to provide reasonable protection against harmful interference in a residential installation. This equipment generates, uses and can radiate radio frequency energy and, if not installed and used in accordance with the instructions, may cause harmful interference in a residential installation. This equipment generates, uses and can radiate radio frequency energy and, if not installed and used in accordance with the instructions, may cause harmful interference to radio or television reception, which can be determined by turning the equipment off and on. The user is encouraged to try to correct the inference by one or more of the following measures:
  - Reorient or relocate the receiving antenna
  - Increase the separation between the equipment and the receiver
- Connect the equipment into an outlet on a circuit different from that to which the receiver is connected

## INSTALLATION (Caution: Before beginning installation turn off the circuit breaker and light switch)

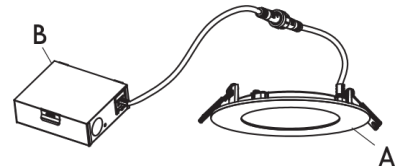
### PACKAGE CONTENTS

#### 4" MODEL



	PARTS	QT
A	4" Lamp	1
B	Junction box with connector	1

#### 6" MODEL



	PARTS	QT
A	6" Lamp	1
B	Junction box with connector	1

# DOWNLIGHT SERIES

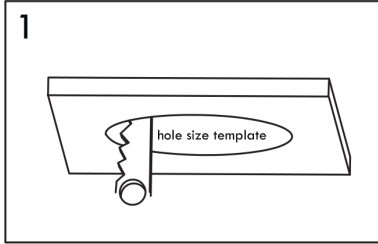
## SLIM CANLESS SWIVEL DOWNLIGHT



### INSTALLATION MANUAL

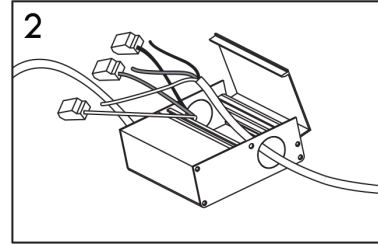
**INSTALLATION** (Caution: Before beginning installation turn off the circuit breaker and light switch)

STEP 1 →



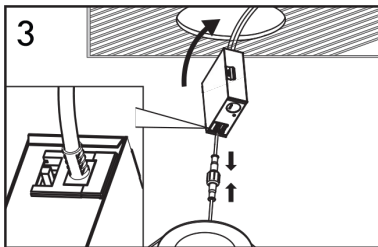
Use the 6" hole size template in the packaging to cut a hole in the ceiling for installation.

STEP 2 →



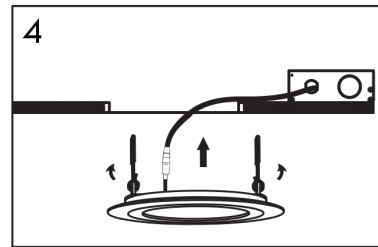
Remove the knockouts for wiring and open the junction box. Junction box contains three wires: hot (black), neutral (white) and bare ground. Connect the two hot wires together (one from the light switch cable and the other from the recessed housing). Repeat the step with the two neutral wires. Close the junction box to complete the wiring.

STEP 3 →



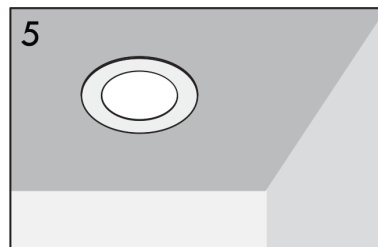
Connect downlight to junction box. Select your favorite color temperature by using the 5CCT switch on the junction box. Place junction box into the ceiling.

STEP 4 →



Push the easy mount clips up and insert the downlight into the ceiling, release clips to mount the downlight on the ceiling.

STEP 5 →



Secure the downlight, the installation is completed.

#### TROUBLE SHOOTING

PROBLEM	POSSIBLE CAUSE	SOLUTION
Fixture does not light	1. Power is off 2. Incorrect wire connection	1. Check fuse, circuit breaker and switch 2. Check Wiring
Circuit breaker trips when turned on	1. Incorrect wire connection	1. Check wiring
Flickering when turned on	1. Dimmer not compatible 2. Loose wiring 3. Faulty switch	1. Check the updated dimmer list, replace with the recommended dimmer 2. Check wiring 3. Check switch

#### CARE AND MAINTENANCE

Clean with non-abrasive glass cleaner and soft cloth. Do NOT use cleaner that contains abrasive agents.  
- Turned off the power before attempting to maintain the luminaire  
- Liquid spray should be applied to the cleaning cloth, do NOT spray liquid directly onto the fixture

#### WARRANTY

Spitzer Lighting warrants this products to be free from defects in material and workmanship for up to five (5) years from the date of purchase at its sole discretion. Any changes or modifications and applications not expressly approved by the manufacturer could void the user's authority to operate the equipment and warranty. Please contact Spitzer Lighting at [INFO@SPITZERLIGHTING.COM](mailto:INFO@SPITZERLIGHTING.COM) or call 844-312-4574 for more warranty information.