

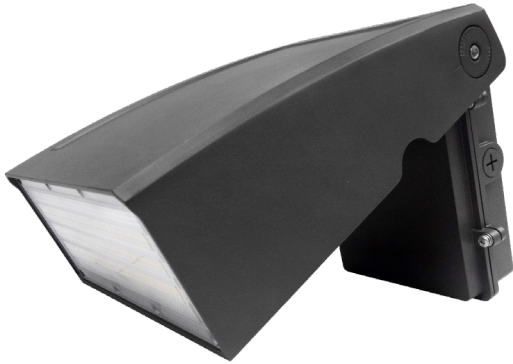
WALL PACK SERIES

WPA-27L / WPA-58L / WPA-91L / WPA-131L



INSTALLATION MANUAL

PRODUCT PARAMETER	
INPUT VOLTAGE	120 - 277V
DRIVER	NOVBO DRIVER
MATERIAL	CAST ALUMINUM



SAFETY INFORMATION

BE SURE THE POWER IS OFF! RISK OF ELECTRICAL SHOCK: Always use the switch to power off. Do not perform any operations while this unit is powered on. The electrical system you want to connect the device to must be grounded. Read the instructions before using or powering this device. The safety instructions must remain with the unit in case of transfer. Any damage to the device linked to an inappropriate use is excluded from support by the warranty. Before connecting, make sure that the current and voltage are compatible with this device. We highly recommend that all installations are made by QUALIFIED ELECTRICIAN. We are NOT responsible by any means for the use or misuse of the following information. We are NOT responsible in whole or part for any harm or damage that may or may not be caused. We reserve the right to revise the components of any product, due to part availability or change ETL, CUL, UL standards without assuming any obligation or liability to modify any products previously manufactured and without notice. These instructions do not cover all details of variations in equipment, nor do they provide every possible contingency to be met. Turn off / unplug power when installing or service device.

WARNING

WARNING: Read all safety precautions and installation instructions carefully before installing or servicing this fixture. Failure to comply with these instructions could result in a potentially fatal electric shock, fire, and/or property damage.

- To reduce the risk of electric shock or other personal injury which could be hazardous or fatal, ensure power is turned OFF at the fuse or breaker box before making any electrical connections or removing the old fixture.
- Changes or modifications not expressly approved by the party responsible for compliance could void the user's authority to operate the equipment.
- To prevent personal injury or product damage only licensed electricians should install.

This product must be installed in accordance with the national electrical code (NEC) and all applicable federal, state and local electrical codes and safety standards.

- Disconnect product and allow cooling prior to servicing.
- Any alteration or modification of this product is expressly forbidden as it may cause serious personal injury, death, property damage and/or product malfunction.
- To prevent product malfunction and/or electrical shock this product must be properly grounded.
- This luminaire is designed to operate in ambient temperatures ranging from -22°F to 113°F and to be horizontally mounted with the LEDs facing down.

FCC WARNING

WARNING: Changes or modifications to this unit not expressly approved by the party responsible for compliance could void the user authority to operate the equipment.

NOTES: This equipment has been tested and found to comply with the limits for a Class B digital device, pursuant to Part 15 of the FCC Rules. These limits are designed to provide reasonable protection against harmful interference in a residential installation. This equipment generates, uses and can radiate radio frequency energy and, if not installed and used in accordance with the instructions, may cause harmful interference to radio communications. However, there is no guarantee that interference will not occur in a particular installation. If this equipment does cause harmful interference to radio or television reception, which can be determined by turning the equipment off and on, the user is encouraged to try to correct the interference by one or more of the following measures:

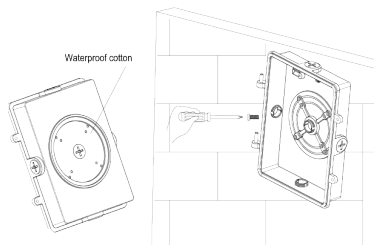
- Reorient or relocate the receiving antenna.
- Increase the separation between the equipment and receiver.
- Connect the equipment into an outlet on a circuit different from that to which the receiver is connected.
- Consult the dealer or an experienced radio/TV technician for help.

PRE - INSTALLATION

- Carefully remove the fixture from the carton.
- Before beginning assembly, installation, or operation of product, make sure all parts are present. Compare parts with package contents list and diagram on previous page. If any part is missing or damaged, do not attempt to assemble, install or operate the product. Contact customer service for replacement parts.
- Tools required for assembly (Not Included): screwdriver, phillips screwdriver, pliers, electrical tape, wire cutters, safety glasses, ladder, wire stripper.

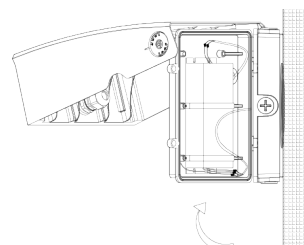
WALL PACK INSTALLATION (Caution: Before beginning installation turn off the circuit breaker and light switch)

STEP 1 →



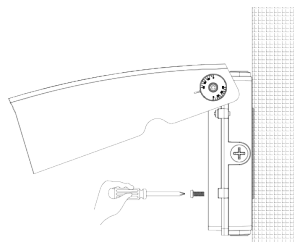
Stick the waterproof cotton on the bottom of the lower cover, and the lower cover is fixed on the wall with screws. The light control is assembled to the lower cover of the power supply box. (as shown)

STEP 2 →



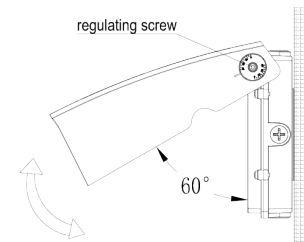
The upper cover and the radiator (assembly) are assembled into the shaft hole through the rotating shaft. Connect the AC power line. (as shown)

STEP 3 →



After the AC power cord is connected, the upper cover and the lower cover are locked by screws (as shown)

STEP 4 →



Customer adjust the two adjusting screw of the lamp according to their own needs fixed angle of the lamp (as shown)

WALL PACK SERIES

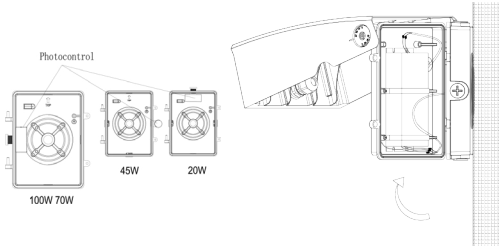
WPA-27L / WPA-58L / WPA-91L / WPA-131L



INSTALLATION MANUAL

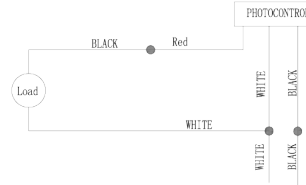
PHOTOCELL INSTALLATION (Caution: Before beginning installation turn off the circuit breaker and light switch)

STEP 1 →



Pick a 1/2" cap of either side of the product and install the photocell (as shown)

STEP 2 →



Complete the photocell system after installing the photocell.

TROUBLE SHOOTING

PROBLEM	POSSIBLE CAUSE	SOLUTION
Light will not come on	A. Light switch is turned off. B. Fuse is blown or circuit breaker is turned off. C. Incorrect circuit wiring	A. Turn light switch on B. Replace fuse or turn circuit breaker on C. Verify that fixture is wired properly

CARE AND MAINTENANCE

CAUTION: Before attempting to clean the fixture, disconnect the power to the fixture by turning the breaker off or removing the fuse from the fuse box. This LED light fixture is made from quality materials that will last many years with minimum care and maintenance. You may want to clean the fixture with a soft cloth periodically. To maintain the best appearance of the fixture, do not use cleaners with chemicals, solvents or harsh abrasives. Do not use liquid cleaner on the LEDs, LED driver, or wiring inside the light fixture.

AFTER INSTALLATION

1. Do all the wires connect in a correct way? As shown in the pictures.
2. Is the ground lead installed appropriately?
3. Make sure the photocell functions well.