

RING

Circular Ring-Shape Pendant Luminaire

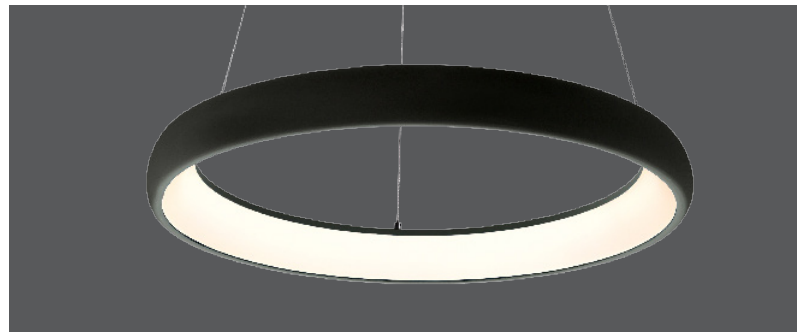
MODEL NO.	TYPE	PROJECT/DATE
-----------	------	--------------

KEY FEATURES

- Simple yet defined seamless ring shape construction
- Deep frosted diffused lens provided visual comfortable direct & indirect illumination
- Field CCT changeable
- Standard dim to 1% 0-10V lighting control

TECHNICAL SUMMARY

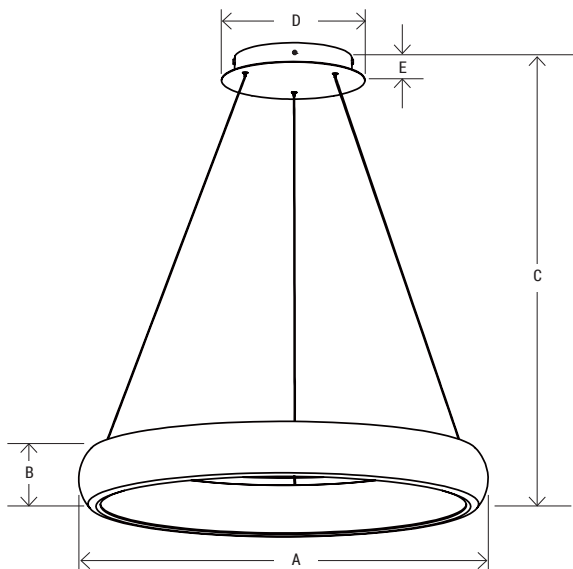
SIZE:	24", 32", 40"
WATTAGE:	50W, 60W, 80W
LUMEN/EFFICACY	2450LM, 3800LM, 4800LM* / 60LM/W
INPUT VOLTAGE	120-277Vac
AVAILABLE CCT/CRI	3000/4000K selectable / CRI >90
CONTROL	0-10V dimming, dim to 1% to off
VALIDATIONS	ETL & cETL dry location listed, FCC compliant, RoHS
LIFETIME	L70>56,000 hours, 5 year warranty
OPERATION TEMP.	-5°F ~ 104°F
FINISH	Matte White, Matte Black



*Delivered lumen may vary, refer to photometric for full performance data



DIMENSIONS



A	24"	32"	40"
B	2.4"		
C	59"		
D	8.7"	8.7"	9.8"
E	1.8"		
WEIGHT	8 lbs	11 lbs	23 lbs

RING

Circular Ring-Shape Pendant Luminaire

MODEL NO.	TYPE	PROJECT/DATE
-----------	------	--------------

ORDERING INFORMATION

*Additional cost and/or lead time on customized fixtures may apply.

<input type="text"/>	-	<input type="text"/>	-	<input type="text"/>	-	<input type="text"/>	-	<input type="text"/>	-	<input type="text"/>
Series	Size	Lumen Package	Input Voltage	CCT	Control	Finish				
RIR - (Ring)	24 - (24") 32 - (32") 40 - (40")	24L - (2400LM) 36L - (3600LM) 48L - (4800LM)	U - (120-277V)	CC - (30/40K Color Changeable)	C10 - (0-10V 10% Dimming)	WH - (Matte White) BK - (Matte Black)				

SPECIFICATIONS

CONSTRUCTION

Aluminum housing with metallic mounting bracket for J-box with acrylic diffuser.

FINISH

Matte white and black finish.

OPTICS/DIFFUSER

Deep frosted acrylic diffuser.

ELECTRICAL

Long life LED system, input voltages 120-277Vac, 3000K/4000K CCT changeable. 0-10V dimming to 1%.

MOUNTING

Pendant.

VALIDATIONS

ETL & cETL listed, FCC, RoHS