

# PKA

## Parking Lot Area light

MODEL NO.	TYPE	PROJECT/DATE
-----------	------	--------------

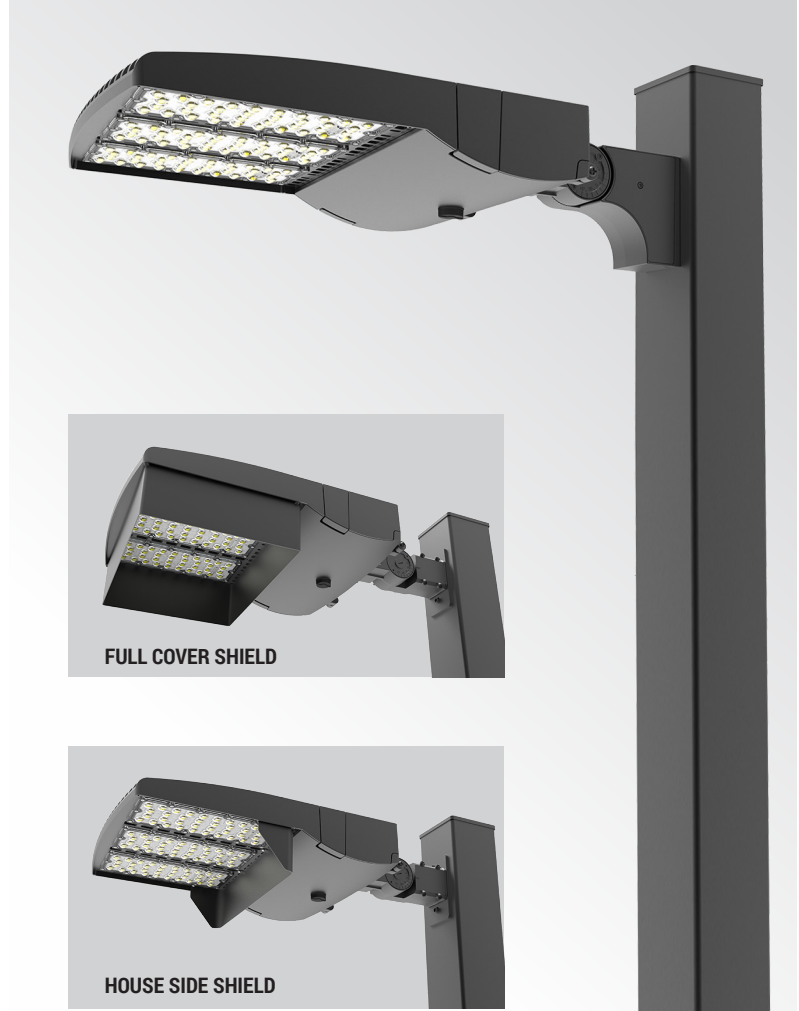
### KEY FEATURES

- Streamline aesthetic design with low effective projected area housing value
- Dark sky compliant with Type III, IV and V distribution available
- Future proof Z10 receptacle for easy sensor add-on
- IP65/IK10 rated, tool-less entry driver compartment
- Multiple mounting and finish option available

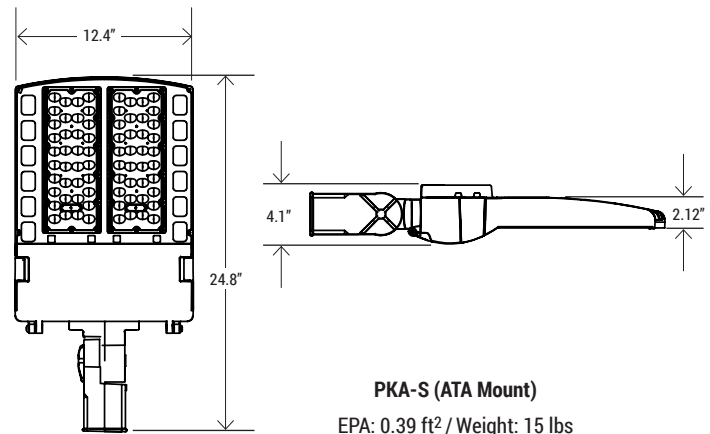
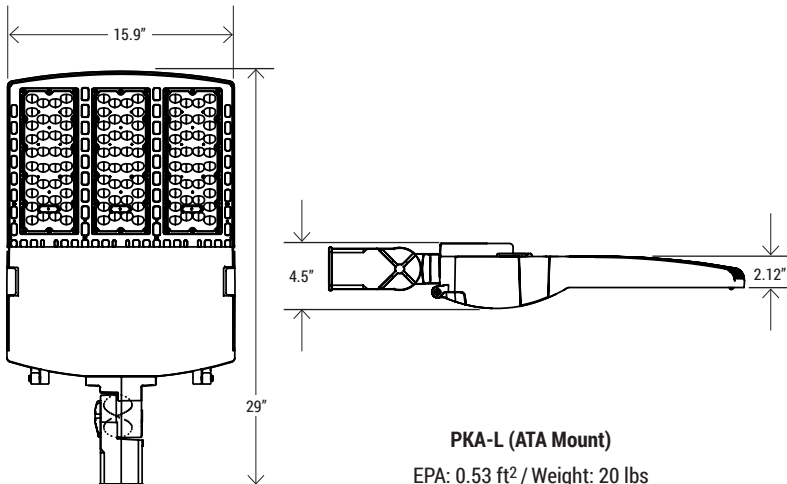
### TECHNICAL SUMMARY

WATTAGE:	150W/120W/90W; 320W/250W/190W
LUMEN/EFFICACY*	22500LM/18000LM/13500LM; 48000LM/36000LM/30000LM; >150LM/W
INPUT VOLTAGE	120-277Vac; 277-480Vac (Optional)
AVAILABLE CCT/CRI	3000K, 4000K, 5000K / 70+ CRI
CONTROL	On/off with 0-10V driver /Optional Bi-level & daylight sensor /Optional Photocontrol
VALIDATIONS	ETL & cETL wet location listed, IP65 and IK10 rated, RoHS, FCC compliant
LIFETIME	L70>54,000 hours, 5 year warranty
SURGE PROTECTOR	10Kv/5Ka standard
OPERATION TEMP.	-13°F ~ 122°F
FINISH	Dark Bronze, Matte Black, Matte White / Custom

\*Delivered lumen may vary, refer to photometric for full performance data



### DIMENSIONS



MODEL NO.	TYPE	PROJECT/DATE
-----------	------	--------------

### ORDERING INFORMATION

\*Additional cost and/or lead time on customized fixtures may apply.

<input type="text"/>	-	<input type="text"/>	-	<input type="text"/>	-	<input type="text"/>	-	<input type="text"/>	-	<input type="text"/>	-	<input type="text"/>	-	<input type="text"/>
Series	Size	Lumen Package	Voltage	CCT	Light Distribution	Control	Mount	Finish						
PKA	L - (Large)	<b>480LC</b> - (48000/36000/ 30000LM)	<b>U</b> - (120-277V) <b>H</b> - (277V-480V)*	<b>30K*</b> - (3000K) <b>40K</b> - (4000K) <b>50K</b> - (5000K)	<b>T3</b> - (Type III) <b>T4</b> - (Type IV) <b>T5</b> - (Type V)	<b>C0</b> - (ON & Off 0-10V driver) <b>C1</b> - (0-10V driver with Z10 receptacle) <b>C2</b> - (Bi-level microwave motion & daylight sensor) <b>C3</b> - (On/off with NEMA 7-pin base with short cap) <b>C4</b> - (On/Off with NEMA 7-pin base with ELL twist lock photocell)	<b>SSA</b> - (Square pole arm mount) <b>SRA</b> - (Round pole arm mount) <b>ASA</b> - (Square pole adjustable arm mount) <b>ARA</b> - (Round pole adjustable arm mount) <b>ATA</b> - (2-3/8" OD adjustable tenon slipfitter mount) <b>TRU</b> - (Trunnion bracket mount (wall mount))	<b>BK</b> - (Matte Black)- <b>DB</b> - (Dark Bronze) <b>WH*</b> - (Matte White)						
	S - (Small)	<b>220LC</b> - (22500/18000/ 13500LM)												
				* = made to order					* = made to order					

### \*AVAILABLE ACCESSORIES:

### \*Accessories



ANT-5-Z10

Microwave motion sensor

- PKA-L-HSS / PKA-S-HSS** - House side shield for PKA
- PKA-L-FCS / PKA-S-FCS** - Full cover shield for PKA
- C2 - ANT-5-Z10** - Bi-level microwave motion & daylight sensor
- C4 - ELL-124-BK** - 3-PIN SUN-TECH Photocontrol

\*Available accessories sold separately

### MOUNTINGS



SSA

Square Pole Mount



SRA

Round Pole Mount



ASA

Square Pole Adjustable Mount



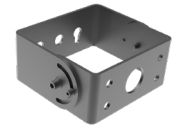
ARA

Round Pole Adjustable Mount



ATA

Adjustable Tenon Slipfitter Mount



TRU

Trunnion Mount

### SPECIFICATIONS

#### CONSTRUCTION

Die-cast aluminum housing with tool-less entry driver compartment.

#### FINISH

Rust and corrosion proof zinc-infused polyester powder coating finish in dark bronze and black.

#### OPTICS/DIFFUSER

High impact and UV resist polycarbonate optical lens.

#### ELECTRICAL

Long life LED system with constant current 0-10V dimmable driver and 10Kv surge protection.

#### MOUNTING

7 mounting bracket arms available for different application.

#### VALIDATIONS

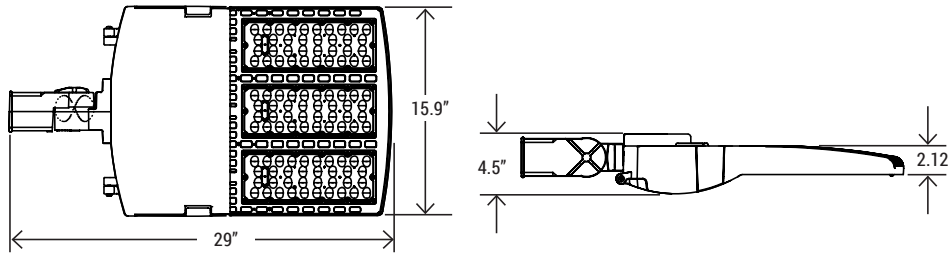
ETL & cETL wet location Listed, IP65 and IK10 rated, FCC compliant, RoHS compliant

# PKA

## Parking Lot Area light

MODEL NO.	TYPE	PROJECT/DATE
-----------	------	--------------

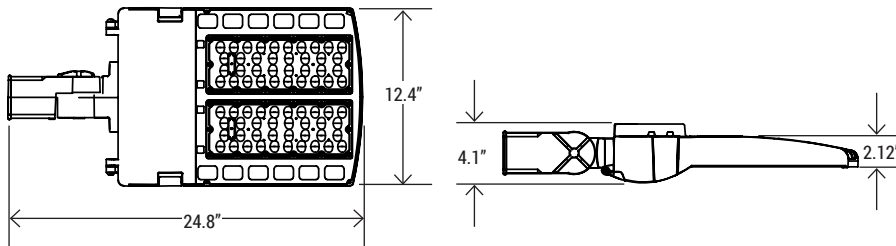
### EPA DATA



#### PKA-L (ATA Mount)

EPA:	0.53 ft <sup>2</sup>
Weight:	20 lbs

CONFIGURATION							
EPA	0.53 ft <sup>2</sup>	1.06 ft <sup>2</sup>	0.96 ft <sup>2</sup>	1.49 ft <sup>2</sup>	1.2 ft <sup>2</sup>	1.92 ft <sup>2</sup>	1.06 ft <sup>2</sup>
Net Weight	20 lbs	40 lbs	40 lbs	60 lbs	60 lbs	80 lbs	40 lbs



#### PKA-L (ATA Mount)

EPA:	0.39 ft <sup>2</sup>
Weight:	15 lbs

CONFIGURATION							
EPA	0.39 ft <sup>2</sup>	0.78 ft <sup>2</sup>	0.77 ft <sup>2</sup>	1.16 ft <sup>2</sup>	1.0 ft <sup>2</sup>	1.54 ft <sup>2</sup>	0.78 ft <sup>2</sup>
Net Weight	15 lbs	30 lbs	30 lbs	45 lbs	45 lbs	60 lbs	30 lbs

### ELECTRICAL LOAD

WATTAGE	120V	208V	240V	277V	347V	480V
90W	0.75	0.43	0.375	0.32	0.25	0.18
120W	1	0.57	0.5	0.43	0.34	0.25
150W	1.25	0.72	0.625	0.54	0.43	0.31
190W	1.58	0.91	0.79	0.68	0.54	0.39
250W	2.08	1.2	1.04	0.9	0.72	0.52
320W	2.66	1.53	1.33	1.15	0.92	0.66

MODEL NO.	TYPE	PROJECT/DATE
-----------	------	--------------

### PERFORMANCE TABLE

#### LUMEN OUTPUT

Lumen values are based on photometric tests conducted in accordance with IESNA LM-79-08 standards. The data provided is representative of the configurations shown and falls within the tolerances allowed by Lighting Facts. For performance data on configurations not listed here, please contact the factory.

WATTAGE	TYPE	4000K				5000K			
		LUMENS	B	U	G	LUMENS	B	U	G
90W	3	12,659	3	0	3	1,3050	3	0	3
	4	12,659	3	0	3	13,050	3	0	3
	5	13,095	4	0	3	13,500	4	0	3
120W	3	16,878	3	0	3	17,400	3	0	3
	4	16,878	3	0	3	17,400	3	0	3
	5	17,460	4	0	3	18,000	4	0	3
150W	3	21,098	3	0	3	21,750	3	0	3
	4	21,098	3	0	3	21,750	3	0	3
	5	21,825	4	0	3	22,500	4	0	3
190W	3	26,724	4	0	4	27,500	4	0	4
	4	26,724	4	0	4	27,500	4	0	4
	5	27,845	5	0	4	28,500	5	0	4
250W	3	35,163	4	0	4	36,250	4	0	4
	4	35,163	4	0	4	36,250	4	0	4
	5	36,375	5	0	5	37,500	5	0	5
320W	3	45,008	4	0	4	46,400	4	0	4
	4	45,008	4	0	4	46,400	4	0	4
	5	46,560	5	0	5	48,000	5	0	5