

# PEAK SR

## Medium and Large Full Cut-off Wall Luminaire

MODEL NO.	TYPE	PROJECT/DATE
-----------	------	--------------

### KEY FEATURES

- Modern rectilinear design
- Multiple distributions option available for different applications
- Standard lumen and CCT changeable
- Zero uplight dark sky compliant

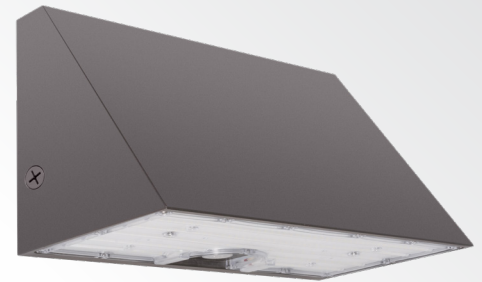
### TECHNICAL SUMMARY

SIZE	Medium, Large
WATTAGE	M:70W/56W/45W/28W; 120W/96W/72W/48W; L:165W/132W/99W/66W
LUMEN*/EFFICACY	M:11000LM/8800LM/7100LM/4400LM; 17000LM/15000LM/11000LM/8100LM L: 22000LM/19000LM/15000LM/10000LM up to 150LM/W
INPUT VOLTAGE	120-277Vac, 277-480Vac optional
AVAILABLE CCT/CRI	30/40/50K changeable; CRI >70 *WFPF-M-170LC only has 40K/50K CC option
CONTROL	On/off, On/off with button photocell, 0-10V Bi-level micro-wave motion sensor, 0-10V Bi-level PIR occupancy sensor
VALIDATIONS	UL & cUL wet location listed, IP65, IK08(lens), IK10(housing) FCC, RoHS, DLC Premium
LIFETIME	L90> 50,000 hours, 5 year warranty
DISTRIBUTION	Type III, Type IV, Type General
OPERATION TEMP.	-13°F ~ 113°F (w/o EM) / 32°F ~ 113°F (with EM1, EM15) / -4°F ~ 113°F (with EMC8)
FINISH	Dark Bronze, Black, White

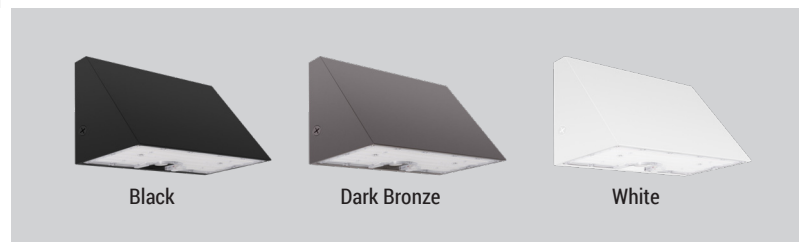
\*Delivered lumen may vary, refer to photometric for full performance data



PEAK-L



PEAK-M



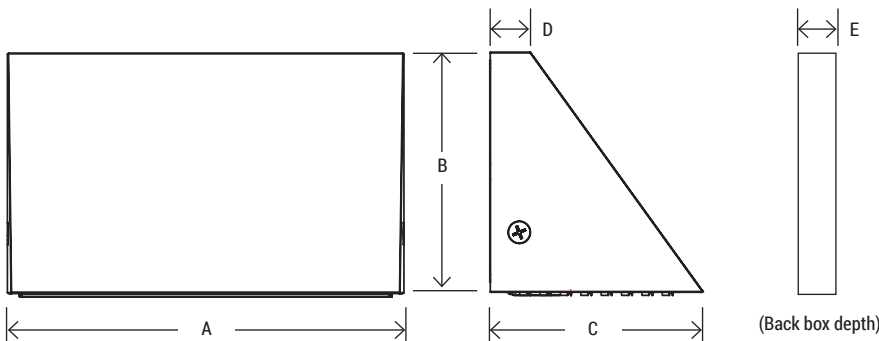
Black

Dark Bronze

White



### DIMENSIONS



Model No.	PEAK-M	PEAK-L
A	12.4"	15"
B	7.4"	9"
C	7"	8"
D	1.5"	1.5"
E	1.77"	1.77"
Weight	8.14 lbs	11.5 lbs
W/ back box	9.14 lbs	13 lbs

# PEAK SR

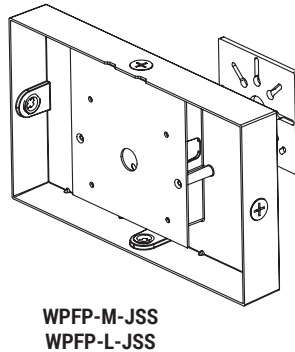
## Medium and Large Full Cut-off Wall Luminaire

MODEL NO.	TYPE	PROJECT/DATE
-----------	------	--------------

### ORDERING INFORMATION

\*Additional cost and/or lead time on customized fixtures may apply.

Series	Size	Lumen Package	Input Voltage	CCT	Distribution	Control	Finish	EM Option*
WFPF	M - (Medium)	<b>71L</b> - (7100LM) <b>110LC</b> - (11000/8800/7100/4400LM) <b>170LC</b> - (17000/15000/11000/8100LM)	<b>U</b> - (120-277V) <b>H</b> - (277V-480V)**	<b>CC</b> - (30K/40K/50K Color Changeable)	<b>T3</b> - (Type III)* <b>T4</b> - (Type IV) <b>TG</b> - (Type General)*	<b>C0</b> - (On/off) <b>COP</b> - (On/off with button photocell) <b>CMM</b> - (0-10V Bi-level microwave motion sensor)* <b>CMP</b> - (0-10V Bi-level PIR occupancy sensor)* <b>CMB</b> - (0-10V Bi-level motion sensor with button photocell)* <b>CPB</b> - (0-10V Bi-level PIR sensor with button photocell)*	<b>DB</b> - (Dark Bronze) <b>B</b> - (Black) <b>W</b> - (White)	<b>EM1</b> - (8W Factory Installed Integrated EM) <b>EM15</b> - (15W Factory Installed Integrated EM) <b>EMC8</b> - (8W Factory Installed Cold Rated Integrated EM) <b>EMC15</b> - (15W Factory Installed Cold Rated Integrated EM)
	L - (Large)	<b>220LC</b> (22000/19000/15000/10000LM)		(170LC is 40K/50K CCT changeable)		**COP, CMM, CMP, CPB & CMB option not available for High Voltage (H)		**EM not available for High Voltage (H)



### \*AVAILABLE ACCESSORIES: (Sold separately)

#### \*Accessories

- CMM-ANT-5-4T** - (Bi-level motion sensor)
- CMP-ANT-6-4T** - (Bi-level PIR motion sensor)
- RC-100** - (Remote Control)
- WFPF-M-JSS-[DB/B/W]** - (WFPF-M backbox with 4 direction conduit knockouts)
- WFPF-L-JSS-[DB/B/W]** - (WFPF-L backbox with 4 direction conduit knockouts)

### SPECIFICATIONS

#### CONSTRUCTION

The single-piece cast aluminum housing optimized thermal dissipation from the LED engine and promote long life. The die-cast door frame is fully gasketed with a silicone gasket to keep out moisture and dust, providing an IP65 rating.

#### FINISH

Exterior parts are protected by a zinc-infused Super Durable TGIC thermoset powder coat finish that provides superior resistance to corrosion and weathering.

#### OPTICS/DIFFUSER

UV stabilized polycarbonate optic engineered for superior application efficiency which maximizes the light in the areas where it is most needed. Type III\*, Type IV, General\* distribution available.

#### ELECTRICAL

Light engine consists of high-efficacy LEDs mounted to aluminum boards to maximize heat dissipation, reported L90 >50,000 hours. A Class 2, constant current 0-10V dimmable driver with 120V-277Vac, 50-60 HZ. Ships with field enable/disable button photocell.

#### MOUNTING

Wall Mount.

#### VALIDATIONS

UL & cUL wet location listed, IP65, IK08 (lens), IK10 (housing)FCC, RoHS, Dark Sky Compliant, DLC Premium

# PEAK SR

## Medium and Large Full Cut-off Wall Luminaire

MODEL NO.	TYPE	PROJECT/DATE
-----------	------	--------------



DLC Premium  
Visit <https://www.designlights.org/qpl> to confirm qualification.)

SPITZER MODEL NUMBER	DLC PRODUCT ID
WFPF-71L-U-40K-T4-[C1,C2,C3,C4]-[DB,WH,BL,SL]	S-78TLGJ
WFPF-71L-U-50K-T3-[C1,C2,C3,C4]-[DB,WH,BL,SL]	S-55SD59
WFPF-71L-U-50K-T4-[C1,C2,C3,C4]-[DB,WH,BL,SL]	S-4DNXBQ
WFPF-71L-U-40K-T3-[C1,C2,C3,C4]-[DB,WH,BL,SL]	S-HG81JR
WFPF-110LC-U-CC-T3-[C1,C2,C3,C4]-[DB,WH,BL,SL]	S-F7QN0F
WFPF-110LC-U-CC-TG-[C1,C2,C3,C4]-[DB,WH,BL,SL]	S-RJFMM5
WFPF-110LC-U-CC-T4-[C1,C2,C3,C4]-[DB,WH,BL,SL]	S-JV9GB3
WFPF-170LC-U-CC-TG-[C1,C2,C3,C4]-[DB,WH,BL,SL]	S-69PLQF
WFPF-170LC-U-CC-T4-[C1,C2,C3,C4]-[DB,WH,BL,SL]	S-L0JS5Q
WFPF-170LC-U-CC-T3-[C1,C2,C3,C4]-[DB,WH,BL,SL]	S-BQ563R