

FLOW

Architectural Surface Cut-off Illumination Vandal Resistant Luminaire

MODEL NO.	TYPE	PROJECT/DATE
-----------	------	--------------

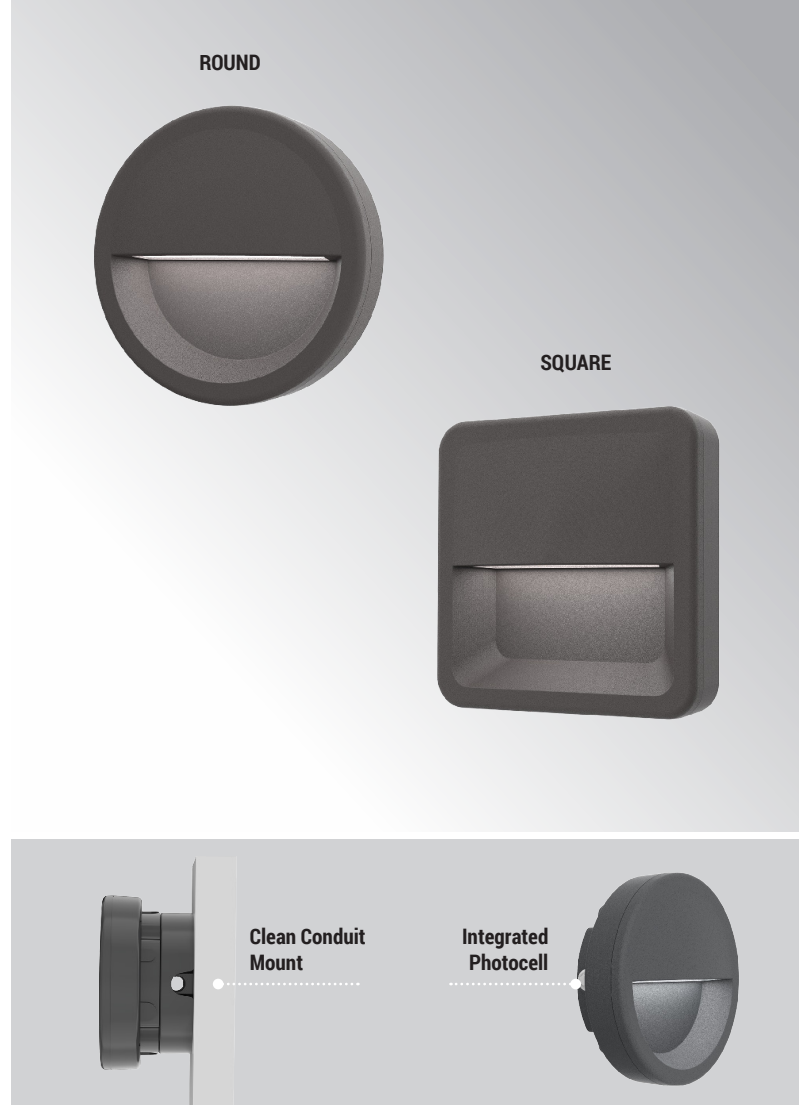
KEY FEATURES

- Flow combines stylistic elegance with rugged protection and vandal resistance
- Surface mount in round & square shape, cut-off distribution delivering purposeful illumination
- Luminaire is ingress protection rated IP65, impact rated IK10, ADA & Dark Sky compliant
- 3 CCT changeable LED system with 0-10V dimmable, integrated EM driver option available

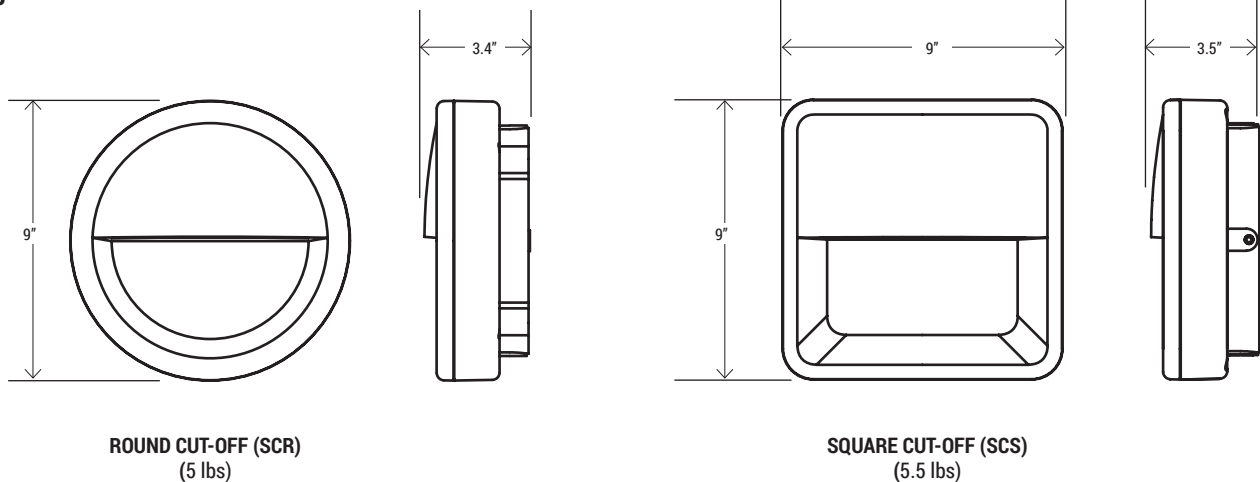
TECHNICAL SUMMARY

SIZE/SHAPE:	Round (9") / Square (9")
WATTAGE:	20W/16W/12W
LUMEN/EFFICACY*	1000/800/600LM changeable (factory default 1000LM), 50LM/W
INPUT VOLTAGE	120-277Vac
AVAILABLE CCT/CRI	3000K, 3500K, 4000K, 5000K, Custom / 80 CRI standard
CONTROL	On/off with 0-10V dimming driver, on/off button photocell optional, Bi-level motion sensor optional.
VALIDATIONS	ETL & cETL wet location listed, IP65 and IK10 rated, ADA & Dark Sky compliant, FCC & RoHS compliant
LIFETIME	L70>100,000 hours, 5 year warranty
OPERATION TEMP.	-40°F ~ 122°F / 32°F ~ 122°F (with EM)
FINISH	Dark bronze, Matte Black, Matte White, Silver Gray

*Delivered lumen may vary, refer to photometric for full performance data



DIMENSIONS



(Note: Additional 1.7" will be added to the depth when mount with FLOW-JCC option)

FLOW

Architectural Surface Cut-off Illumination Vandal Resistant Luminaire

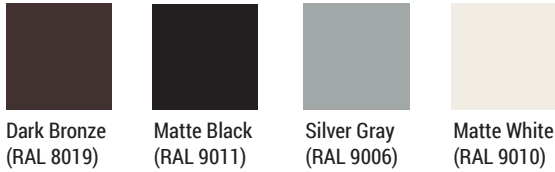
MODEL NO.	TYPE	PROJECT/DATE
-----------	------	--------------

ORDERING INFORMATION

*Additional cost and/or lead time on customized fixtures may apply.

<input type="text"/>	-	<input type="text"/>	-	<input type="text"/>	-	<input type="text"/>	-	<input type="text"/>	-	<input type="text"/>	-	<input type="text"/>	-	<input type="text"/>
Series	Style	Size	Lumen Package	Voltage	CCT	Control	Finish	EM Option						
FLOW (Surface mount)	SCR - (Surface full cutoff round) SCS - (Surface full cutoff square) (Wall mount only)	9 - (9")	10LC - (1000/800/600LM) Custom*	U - (120-277V)	CC - (30K/35K/40K/CCT Changeable) 50K - (5000K)* Custom*	C1 - (ON & Off 0-10V dimmable driver) C2 - (ON & Off button integrated photocell)* C3 - (Bi-level motion sensor)*	BK - (Matte Black) DB - (Dark Bronze) SG - (Silver Gray) WH - (Matte White) Custom RAL*	EM - (4W factory installed EM)*						
			<i>*made to order</i>											

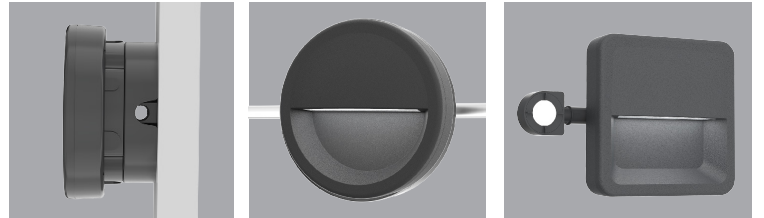
FINISH REFERENCE



*Accessories

- FPFA-R** - Field installed Wall mount on/off remote photocell control up to 10 Defender/flow, 120Vac
- FPFA-U** - Field installed Wall mount on/off remote photocell control up to 10 Defender/flow, 208-277Vac
- FLOW-JCC-BK/DB/WH/SG** - Outdoor rated surface mount 4" Octagonal J-box with decorative conduit feed canopy cover for FLOW in matching finish to the luminaire, conduit is not included and not compliant to ADA

*Available accessories sold separately



SPECIFICATIONS

CONSTRUCTION

Die-cast aluminum housing with a full cut-off impact resistant prismatic PC Lens is fully gasketed with tubular silicone gasket.

FINISH

Exterior parts are protected by a rust and corrosion proof zinc-infused polyester powder coating applied through a 5-stage preparation process.

OPTICS/DIFFUSER

Full cut-off Impact resistant prismatic diffused PC Lens provides uniformed illumination and vandal protection.

ELECTRICAL

Long life 3-CCT changeable LED system with outdoor rated driver, 0-10V dimmable, with 120-277Vac multi-volt compatibility, factory installed button photocell option available.

MOUNTING

Surface mount to wall

VALIDATIONS

ETL & cETL wet location listed, IP65 and IK10 rated, ADA & Dark Sky compliant, FCC, RoHS compliant