

# FLOW

## Architectural Cut-off Illumination Bollard Luminaire

MODEL NO.	TYPE	PROJECT/DATE
-----------	------	--------------

### KEY FEATURES

- Flow combines stylistic elegance with rugged protection and vandal resistance
- Bollard mount in round & square shape, cut-off distribution delivering purposeful illumination
- Luminaire is IP65 Ingress Protection rated, IK10 impacted rated and Dark Sky compliant
- 3 CCT changeable LED system with 0-10V dimmable, integrated EM driver option available

### TECHNICAL SUMMARY

SIZE/SHAPE:	Round 9" full distribution in 24" and 40" Overall height / Square 9" full distribution in 24" and 40" Overall height
WATTAGE:	20W/16W/12W
LUMEN/EFFICACY*	1000/800/600LM changeable (factory default 1000LM), 50 LM/W
INPUT VOLTAGE	120-277Vac
AVAILABLE CCT/CRI	3000K, 3500K, 4000K, 5000K, Custom / 80 CRI standard
CONTROL	On/off with 0-10V dimming driver, on/off button photocell optional
VALIDATIONS	ETL & cETL wet location listed, IP65 and IK10 rated, Dark sky compliant, FCC & RoHS compliant
LIFETIME	L70>100,000 hours, 5 year warranty
OPERATION TEMP.	-40°F ~ 122°F / 32°F ~ 122°F (with EM)
FINISH	Dark Bronze, Matte Black, Matte White, Silver Gray

\*Delivered lumen may vary, refer to photometric for full performance data

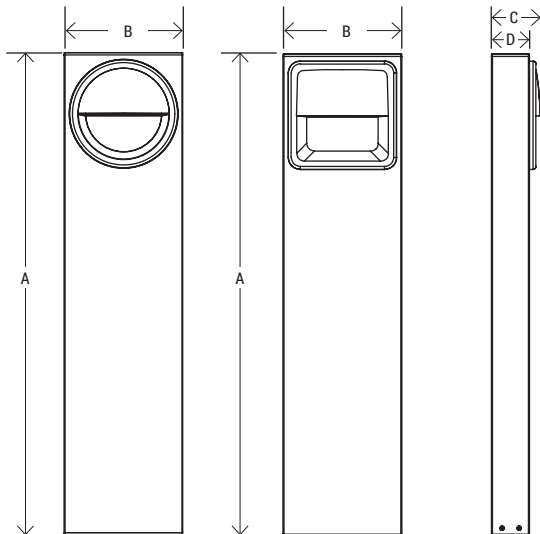


SQUARE

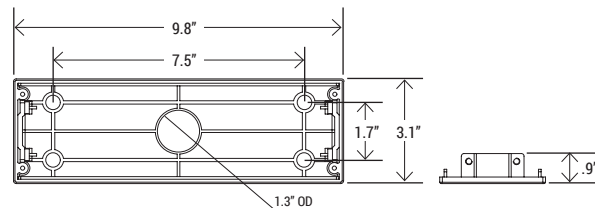
ROUND



### DIMENSIONS



Model No.	A	B	C	D	WEIGHT
BOLLARD CUT-OFF ROUND (BCR)	24"	9.8"	4"	3.1"	6.6 lbs
	40"				9.1 lbs
BOLLARD CUT-OFF SQUARE (BCS)	24"	9.8"	4"	3.1"	7.1 lbs
	40"				9.6 lbs



# FLOW

## Architectural Cut-off Illumination Bollard Luminaire

MODEL NO.	TYPE	PROJECT/DATE
-----------	------	--------------

### ORDERING INFORMATION

\*Additional cost and/or lead time on customized fixtures may apply.

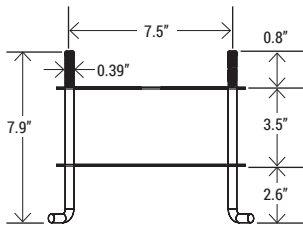
<input type="text"/>	-	<input type="text"/>	-	<input type="text"/>	-	<input type="text"/>	-	<input type="text"/>	-	<input type="text"/>	-	<input type="text"/>	-	<input type="text"/>
Series	Style	Size	Lumen Package	Voltage	CCT	Control	Finish	EM Option						
<b>FLOW</b> (Bollard)	<b>BCR</b> - (Bollard cut-off illuminate round)  <b>BCS</b> - (Bollard cut-off illuminate square)	<b>24</b> - (24" height) <b>40</b> - (40" height) <b>Custom*</b> - (12" min)	<b>10LC</b> - (1000/800/600LM) <b>Custom*</b>	<b>U</b> - (120-277V)	<b>CC</b> - (30K/35K/40K/CCT Changeable) <b>50K</b> - (5000K)* <b>Custom*</b>	<b>C1</b> - (ON & Off 0-10V dimmable driver) <b>C2</b> - (ON & Off button integrated photocell)*	<b>BK</b> - (Matte Black) <b>DB</b> - (Dark Bronze) <b>SG</b> - (Silver Gray) <b>WH</b> - (Matte White) <b>Custom RAL*</b>	<b>EM</b> - (4W factory installed EM)*						
			<i>*made to order</i>											

### \*AVAILABLE ACCESSORIES:

\*Available accessories sold separately



FLOW-B-ANC



### \*Accessories

**FLOW-B-ANC** - Stainless-steel 4 anchors set for Flow Bollard (**Required for installation, pre-ship available**)

### FINISH REFERENCE

Dark Bronze (RAL 8019)	Matte Black (RAL 9011)	Silver Gray (RAL 9006)	Matte White (RAL 9010)

### SPECIFICATIONS

#### CONSTRUCTION

Die-cast aluminum housing with a impact resistant prismatic PC Lens is fully gasketed with tubular silicone gasket in 6061 extruded aluminum bollard body.

#### FINISH

Exterior parts are protected by a rust and corrosion proof zinc-infused polyester powder coating applied through a 5-stage preparation process.

#### OPTICS/DIFFUSER

Impact resistant prismatic diffused PC Lens provides uniformed illumination and vandal protection.

#### ELECTRICAL

Long life 3-CCT changeable LED system with outdoor rated driver, 0-10V dimmable, with 120-277Vac multi-volt compatibility, factory installed button photocell option available.

#### MOUNTING

Anchor based bollard mount.

#### VALIDATIONS

ETL & cETL wet location Listed, IP65 and IK10 rated, Dark sky compliant, FCC, RoHS compliant