

MODEL NO.	TYPE	PROJECT/DATE
-----------	------	--------------

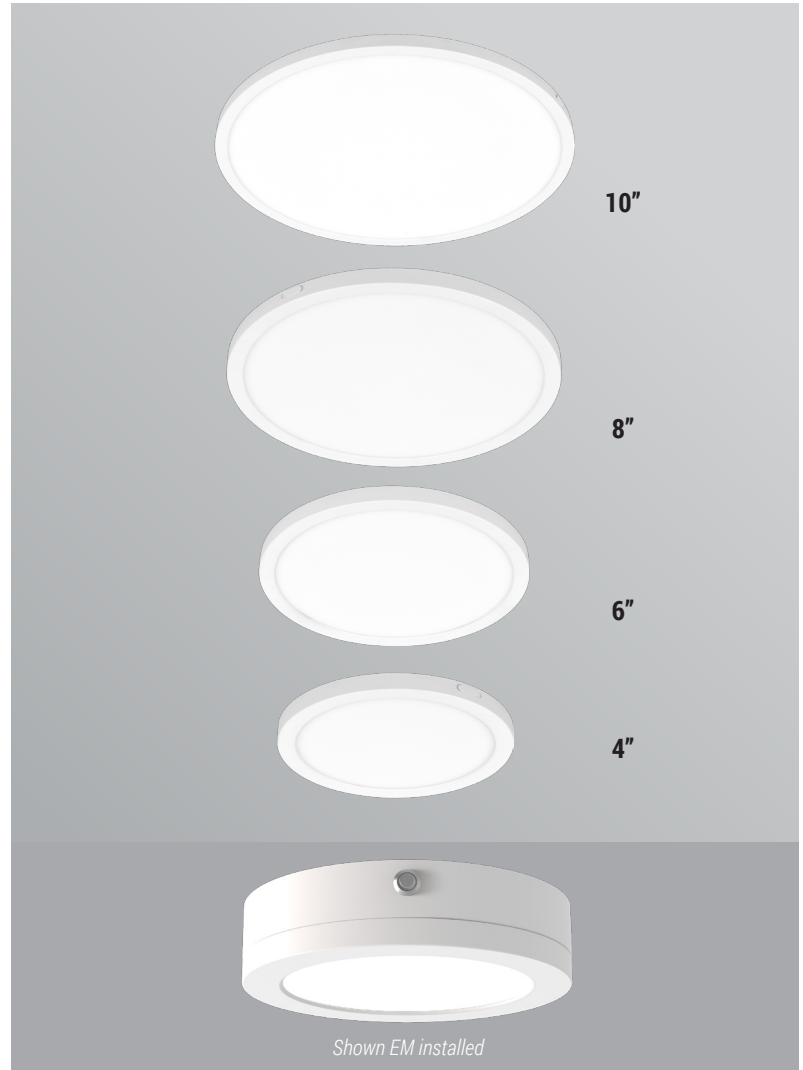
KEY FEATURES

- Slim profiled minimalistic designed surface mount luminaire
- CCT changeable with unobtrusive edge-lit illumination
- Integral emergency driver option available for 6" and 8"

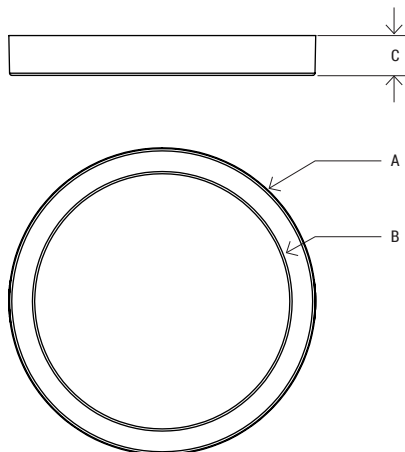
TECHNICAL SUMMARY

SIZE:	4", 6", 8", 10"
WATTAGE:	11W (4") 14W (6") 20W (8") 25W (10")
LUMEN/EFFICACY	650LM, 950LM, 1400LM, 2000LM, up to 80LM/W
INPUT VOLTAGE	120Vac
AVAILABLE CCT/CRI	27K/30K/35K/40K/50K Color changeable, 80CRI
CONTROL	Phase/Triac dimming
VALIDATIONS	ETL & cETL damp location listed, FCC, RoHS compliant
LIFETIME	L70>54,000 hours, 5 year warranty
OPERATION TEMP.	-4°F ~ 104°F / 32°F ~ 104°F
FINISH	Matte White, Matte Black

*Delivered lumen may vary, refer to photometric for full performance data



DIMENSIONS



Model No.	A	B	C	WEIGHT	w/ EM
ERS-0406L	5.3"	4.4"	.69"	.55 lb	-
ERS-0609L	7"	6.2"	.69"	1 lb	2 lbs
ERS-0814L	8.8"	8"	.69"	1.5 lbs	2.5 lb
ERS-1020L	11.8"	10.7"	.69"	2.5 lbs	-

MODEL NO.	TYPE	PROJECT/DATE
-----------	------	--------------

ORDERING INFORMATION

*Additional cost and/or lead time on customized fixtures may apply.

- - - -

Series	Lumen Package	Input Voltage	CCT	Finish
ERS	0406L - (4" 650LM)	R - (120Vac)	5CC - (27/30/35/40/50K Color Changeable)	WH - (Matte White) BK - (Matte Black)
	0609L - (6" 950LM)			
	0814L - (8" 1400LM)			
	1020L - (10" 2000LM)			

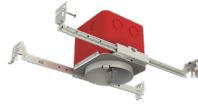
*AVAILABLE ACCESSORIES: (SOLD SEPARATELY)



ERS-0609L-R-EM
ERS-0814L-R-EM
6"/8" Emergency module



ERS-06R-BX
ERS-08R-BX
6"/8" Empty EM housing

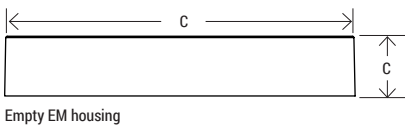
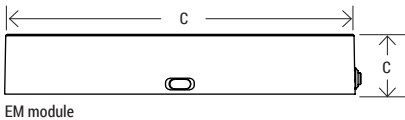


MFR4
4" IC Fire Rated Metallic
Electrical J-box housing

*Accessories

- ERS-0609L-R-EM - 6" Emergency module
- ERS-0814L-R-EM - 8" Emergency module
- ERS-06R-BX - 6" Empty EM housing
- ERS-08R-BX - 8" Empty EM housing
- MFR4 - 4" Fire rated metallic electrical j-box housing

*Available accessories sold separately



Model No.	A	B	WEIGHT
ERS-0609L-R-EM	7.17"	1.38"	1 lb
ERS-0814L-R-EM	8.85"	1.54"	1 lb
ERS-06R-BX	7.17"	1.38"	.8 lb
ERS-08R-BX	8.85"	1.54"	.8 lb



BLACK FINISH

SPECIFICATIONS

CONSTRUCTION

Non-conductive PC housing, less than 0.8" housing profile, integrated aluminum heat-sink and in white or black finish.

FINISH

Polyester coated finish in powder coating after fabrication with embossed facets.

OPTICS/DIFFUSER

Frosted PC.

ELECTRICAL

Regular 120Vac at 60Hz with standard Triac dimming.

MOUNTING

Surface mount (wall or ceiling) directly to an industry standard 4" metal or plastic octagon junction box with 3-1/2" junction box screw-hole spacing. Luminaire provided with leads for direct wire connection in junction box.

VALIDATIONS

ETL & cETL damp location listed, FCC, RoHS compliant