

MODEL NO.	TYPE	PROJECT/DATE
-----------	------	--------------

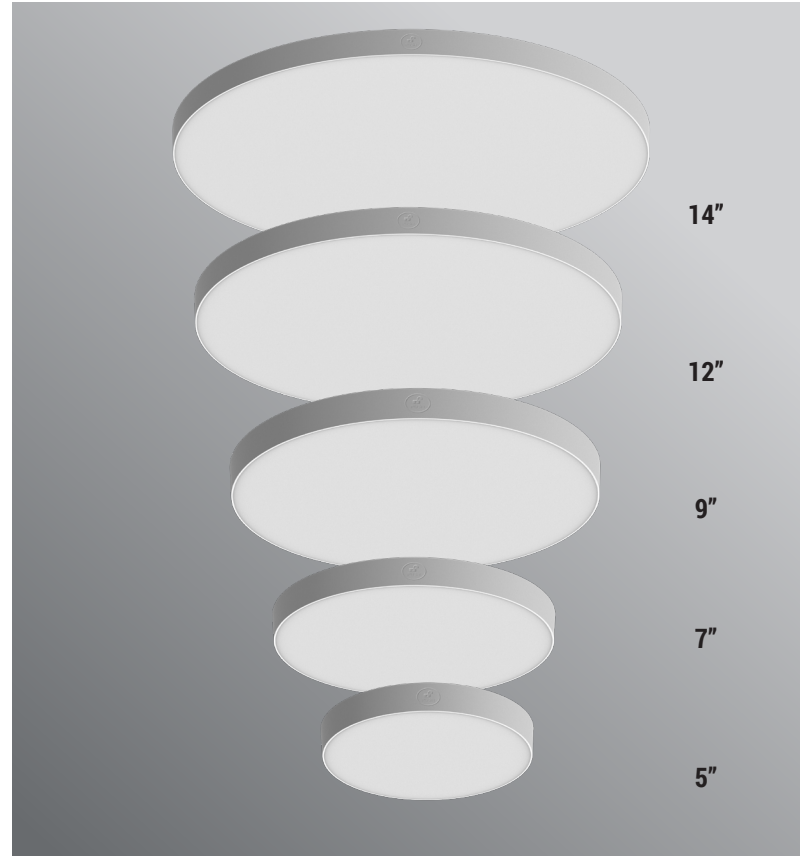
KEY FEATURES

- Edge-to-edge visual comfortable illumination
- Available in both triac and 0-10V dimmable control
- Optional decorative color trim

TECHNICAL SUMMARY

SIZE:	5", 7", 9", 12", 14"
WATTAGE:	8W (5"), 12W (7"), 18W (9"), 24W (12"), 28W (14")
LUMEN	800 (5"), 1200 (7"), 1800 (9"), 2100 (12"), 2800 (14")
EFFICACY	up to 100LM/W
INPUT VOLTAGE	120-277Vac
AVAILABLE CC	2700K/3000K/3500K/4000K/5000K Color changeable
CRI	80CRI standard
CONTROL	5 & 7 inch is triac dimmable @ 120Vac, 9/12/14 inch is triac & 0-10V 10% dual dimmable
VALIDATIONS	ETL & cETL wet location listed, Energy Star listed, Air-tight, IC-rated, FCC & RoHS
LIFETIME	L70>54,000 hours, 5 year warranty
OPERATION TEMP.	32°F ~ 104°F
FINISH	White finish housing with optional color trims

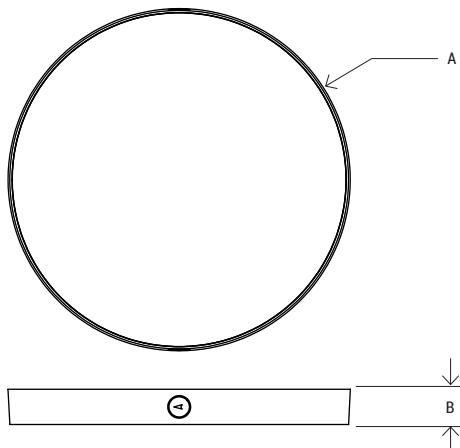
*Delivered lumen may vary, refer to photometric for full performance data



Available Trim Option



DIMENSIONS



Model No.	A	B	WEIGHT
ERA-0508L	5.4"	.9"	.75 lb
ERA-0712L	7"	.9"	1 lb
ERA-0918L	9"	.9"	1.25 lb
ERA-1221L	12"	.9"	2 lbs
ERA-1428L	14"	.9"	2.8 lbs

MODEL NO.	TYPE	PROJECT/DATE
-----------	------	--------------

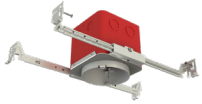
ORDERING INFORMATION

*Additional cost and/or lead time on customized fixtures may apply.



Series	Lumen Package	Input Voltage	CCT	Finish
ERA	0508L - 800LM (5")	U - (120-277Vac)	5CC - 27K/30K/35K/40K/50K color changeable	WH- (Matte White)
	0712L - 1200LM (7")			
	0918L - 1800LM (9")			
	1221L - 2100LM (12")			
	1428L - 2800LM (14")			

*AVAILABLE ACCESSORIES: (SOLD SEPARATELY)



MFR4
4" IC Fire Rated Metallic
Electrical J-box housing

*Accessories

- MFR4** - 4" Fire rated metallic electrical j-box housing
- ERA-05/07/09/12/14-T-MB/DC/MG/BN** - Metal color trim for 5, 7, 9, 12 and 14 inch size in multiple finishes, order separate

SPECIFICATIONS

CONSTRUCTION

Non-conductive PC housing, slim housing profile, integrated aluminum heat-sink.

FINISH

White finish housing with optional color trims

OPTICS/DIFFUSER

Edge-lit with acrylic (PMMA) light guides plate combined with diffusing lens conceals the LEDs from direct view and provides uniform lens luminance.

ELECTRICAL

120-277Vac integrated driver, 5 and 7 inches with Triac/phase dimming, 9, 12 and 14 inch is Triac and 0-10V dual dimmable.

MOUNTING

Surface mount directly to an industry standard 4" metal or plastic octagon junction box with 3-1/2" junction box screw-hole spacing.

VALIDATIONS

ETL & cETL wet location listed, Energy Star listed, FCC, RoHS compliant