

BRICK

Neomodern Rectangle Glass Sconces

MODEL NO.	TYPE	PROJECT/DATE
-----------	------	--------------

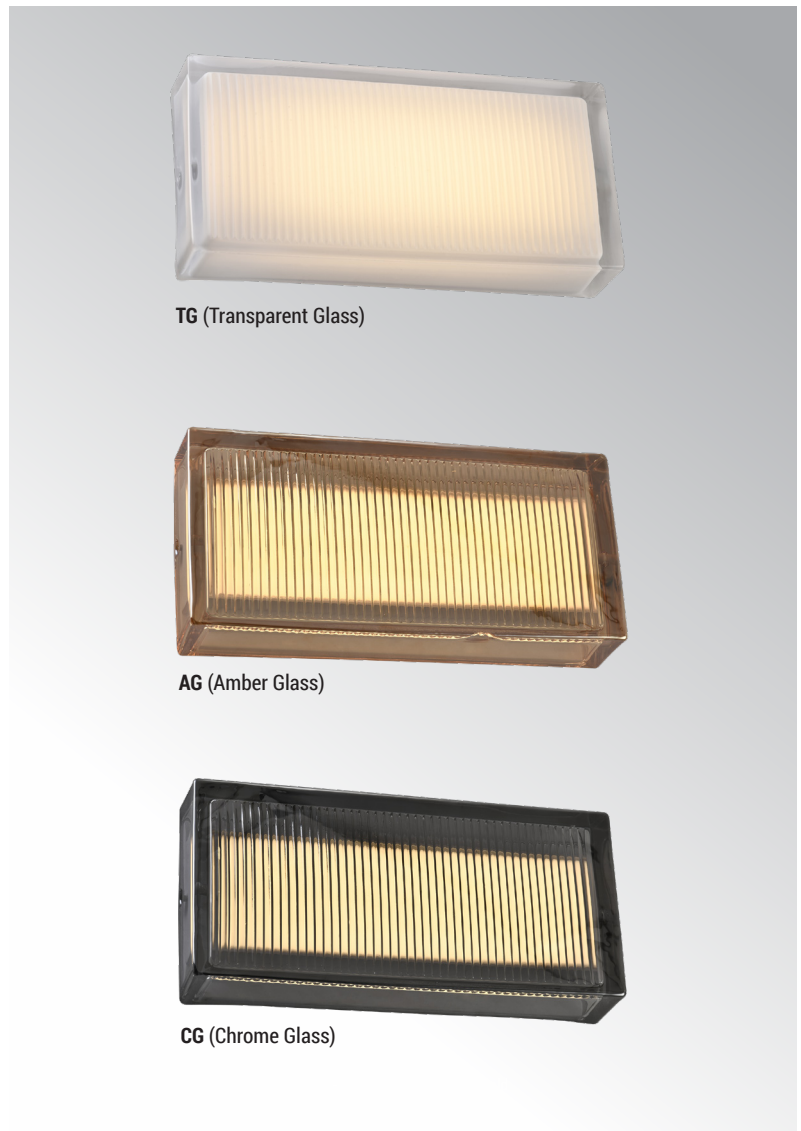
KEY FEATURES

- Choice of variety of artfully designed one-piece solid glass casted shade
- Suitable for both indoor and outdoor application, ADA compliant
- Provide visual comfortable and dimmable 90CRI illumination

TECHNICAL SUMMARY

SIZE:	5" Width x 10" Length x 2" Depth / 5" Width x 16" Length x 2" Depth
WATTAGE:	10" Length 18W / 16" length 24W
LUMEN/EFFICACY*	TG: 700LM for W6009M, 900LM for W6009L AG: 500LM for W6009M, 700LM for W6009L CG: 250LM for W6009M, 400LM for W6009L
INPUT VOLTAGE	120Vac
AVAILABLE CCT/CRI	2700K, 3000K, 3500K, 90CRI standard
CONTROL	Triac phase dimming to 10%
VALIDATIONS	ETL & cETL wet location listed, ADA, FCC, RoHS
LIFETIME	L70>70,000 hours, 5 year warranty
OPERATION TEMP.	-4°F ~ 104°F
FINISH	White (Base) / Transparent, Amber, Chrome (Glass)

*Delivered lumen may vary, refer to photometric for full performance data

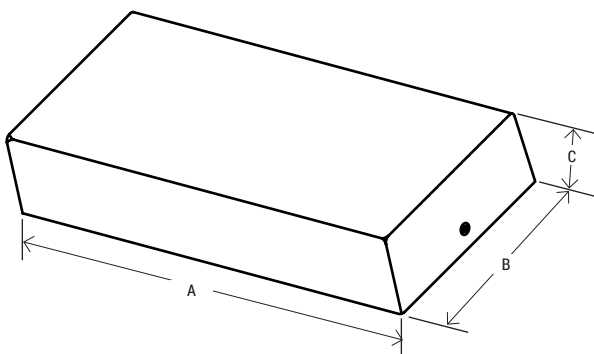


TG (Transparent Glass)

AG (Amber Glass)

CG (Chrome Glass)

DIMENSIONS



Model No.	A	B	C	WEIGHT
BRI-W6009M	10"	5"	2"	4.5 lbs
BRI-W6009L	16"	5"	2"	8 lbs

MODEL NO.	TYPE	PROJECT/DATE
-----------	------	--------------

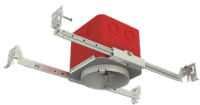
ORDERING INFORMATION

*Additional cost and/or lead time on customized fixtures may apply.

[]	-	[]	-	[]	-	[]
Series	Style	CCT	Glass Type			
BRI	W6009M - (5" x 10", 700LM/18W)	27K - (27K) 30K - (30K) 35K - (35K)	TG - (Transparent glass) AG - (Amber glass)* CG - (Chrome glass)*			
	W6009L - (5" x 16", 900LM/24W)					

*AVAILABLE ACCESSORIES: (SOLD SEPARATELY)

*Accessories
MFR4 - 4" Fire rated metallic electrical j-box housing
BRI-LEM-30K-WH - Brick LED Engine module
BRI-W6009M-TG/AG/CG - Brick TG/AG/CG glass
BRI-W6009L-TG/AG/CG - Brick TG/AG/CG glass



MFR4
4" IC Fire Rated Metallic
Electrical J-box housing

SPECIFICATIONS

CONSTRUCTION

Rectangle Aluminum housing with one-piece solid casted glass shade.

FINISH

Polyester powder coat finish over a multi-stage pre-treatment.

OPTICS/DIFFUSER

One-piece solid casted glass shade.

ELECTRICAL

120Vac Driver-on-board, Triac/phase dim to 10%, long life LED board.

MOUNTING

Surface mount horizontally or vertically directly to a standard 4" octagon J-box (3-1/2" junction box screw-hole spacing required for installation).

VALIDATIONS

ETL & cETL wet location listed, ADA, FCC, RoHS