

LAR

Narrow Aperture Recessed Linear LED Luminaire

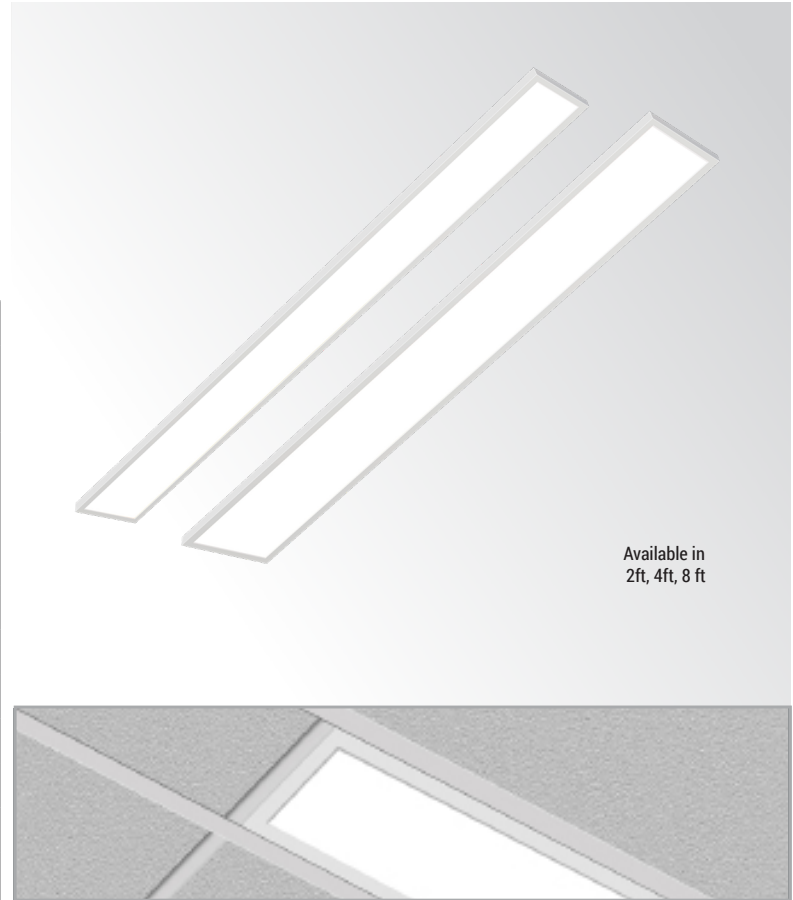
MODEL NO.	TYPE	PROJECT/DATE
-----------	------	--------------

KEY FEATURES

- Recessed luminaire available in three fixed lengths and apertures, it can create pleasing illumination.
- A selectable slide switch comes standard with three selectable wattage levels and three selectable color temperatures.
- Provides the flexibility to adapt to the changing needs of the space, setting, or environment.

TECHNICAL SUMMARY

SIZE	2'x4", 4'x4", 8'x4", 2'x6", 4'x6", 8'x6"
WATTAGE	2'x4" • 2'x6": (20W/15W/10W) 4'x4" • 4'x6": (40W/30W/20W) 8'x4" • 8'x6": (80W/60W/40W)
LUMEN/EFFICACY*	2'x4": 1700/1280/860LM; Up to 86LM/W 4'x4": 3400/2500/1600LM; Up to 85LM/W 8'x4": 6800/5100/3400LM; Up to 85LM/W 2'x6": 1900/1440/960LM; Up to 96LM/W 4'x6": 3800/2800/1900LM; Up to 95LM/W 8'x6": 7600/5700/3800LM; Up to 95LM/W
INPUT VOLTAGE	120-277Vac
AVAILABLE CCT/CRI	30K/35K/40K Color Changeable; 80+CRI
CONTROL	1-10V Dimming
VALIDATIONS	UL & cUL Damp Location Listed, FCC, RoHS Compliant
LIFETIME/WARRANTY	>50,000 HRS, 5 Yr Warranty
BEAM ANGLE	100°
OPERATION TEMP	-30°F ~ 122°F

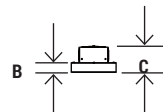
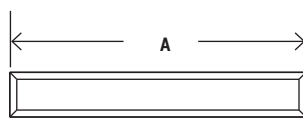


Available in
2ft, 4ft, 8 ft

*Delivered lumen may vary, refer to photometric for full performance data



DIMENSIONS



	A	B	C	WEIGHT
4x2'	23.7"	.5"	2.17"	3.31lbs
4x4'	47.76"	.5"	2.17"	5.00lbs
4x8'	95.75"	.5"	2.17"	9.00lbs
6x2'	23.7"	.5"	2.17"	4.60lbs
6x4'	47.76"	.5"	2.17"	7.50lbs
6x8'	95.75"	.5"	2.17"	11.50lbs

LAR

Narrow Aperture Recessed Linear LED Luminaire

MODEL NO.	TYPE	PROJECT/DATE
-----------	------	--------------

ORDERING INFORMATION

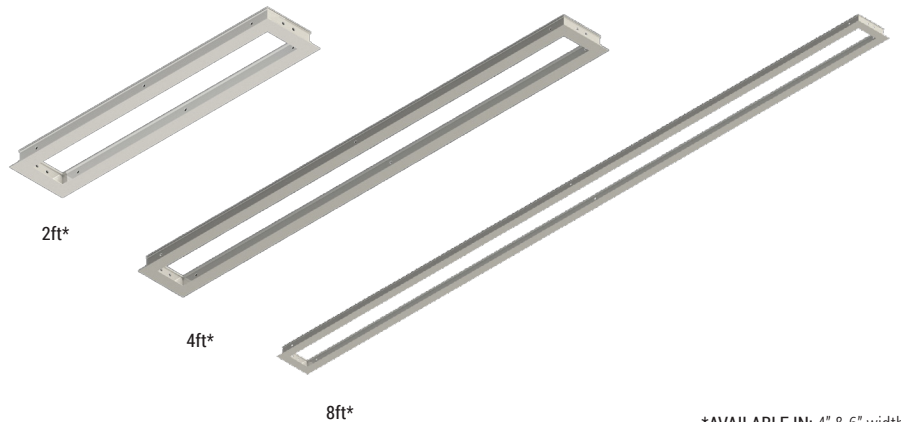
[]	-	[]	-	[]	-	[]	-	[]
Series	Size	Lumen Package	Input Voltage	CCT				
LAR	24 - (2'x4")	17LC - (1700/1280/860LM)	U - (120 -277Vac)	CC - (30/35/40K Color Changeable)				
	44 - (4'x4")	34LC - (3400/2500/1600LM)						
	84 - (8'x4")	68LC - (6800/5100/3400LM)						
	26 - (2'x6")	19LC - (1900/1440/960LM)						
	46 - (4'x6")	38LC - (3800/2800/1900LM)						
	86 - (8'x6")	76LC - (7600/5700/3800LM)						

*Additional cost and/or lead time on customized fixtures may apply.

AVAILABLE ACCESSORIES

*SOLD SEPARATELY

LAR Drywall Recessed Kit	
FIXTURE	CEILING OPENING
LAR-24-DFK (L 2' X W 4")	L 24 3/4" X W 4 3/4"
LAR-26-DFK (L 2' X W 6")	L 24 3/4" X W 6 3/4"
LAR-44-DFK (L 4' X W 4")	L 48 3/4" W 4 3/4"
LAR-46-DFK (L 4' X W 6")	L 48 3/4" X W 6 3/4"
LAR-84-DFK (L 8' X W 4")	L 96 3/4" X W 4 3/4"
LAR-86-DFK (L 8' X W 6")	L 96 3/4" X W 6 3/4"



*AVAILABLE IN: 4" & 6" widths

SPECIFICATIONS

CONSTRUCTION

Cast-aluminum extruded housing with precision welded corners for a sleek appearance. Junction/wiring box included. With standard T-bar clips.

FINISH

White powder-coated finish

OPTICS

Precision laser cut optical grade acrylic guide provides uniformed edge-lit lighting distribution.

ELECTRICAL

Universal input voltage: 120V-277Vac. Standard Class 2 isolated drivers with 1-10V dimming. IES files available upon request.

VALIDATIONS

cUL & UL Damp Location Listed, FCC, RoHS Compliant