

MODEL NO.	TYPE	PROJECT/DATE
-----------	------	--------------

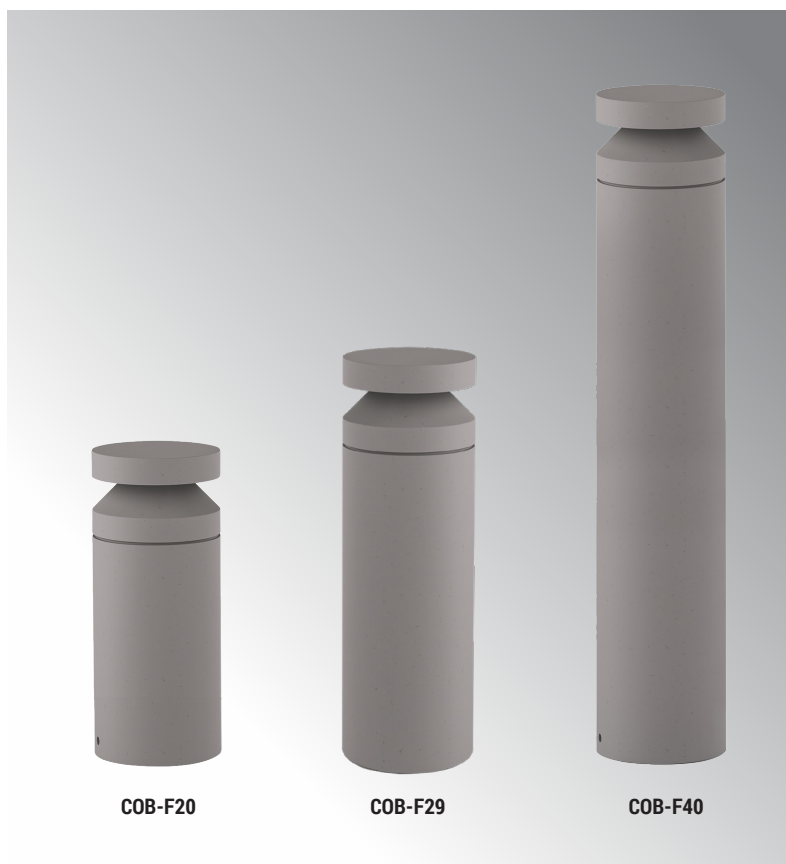
### KEY FEATURES

- Visual appealing concrete stone material housing creates an exceptional architectural texture perception
- Impervious to rust and decay caused by high humidity, chemical or other environmental factors
- Provide dark sky compliant symmetric or asymmetric visual comfortable illumination
- Fire resistance and environmentally friendly with high maintainability

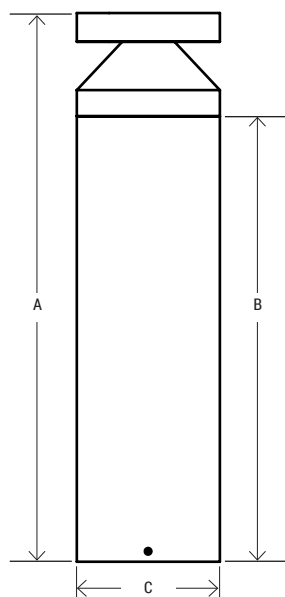
### TECHNICAL SUMMARY

SIZE:	20", 29" and 40" Overall height
WATTAGE:	15W
LUMEN/EFFICACY*	Symmetric: 750LM / Asymmetric: 300LM, 50LM/W
INPUT VOLTAGE	120-277Vac
AVAILABLE CCT/CRI	2700K, 3000K, 3500K, 4000K at 80CRI standard, 1800K Amber color (595nm) optional
CONTROL	On/Off with 0-10V driver
VALIDATIONS	ETL and cETL wet location listed, IP65 and IK08 rated, Dark sky compliant, FCC compliant, RoHS
LIFETIME	L70>100,000 hours, 5 year warranty
DISTRIBUTION	Symmetric and Asymmetric
OPERATION TEMP.	-40°F ~ 122°F
FINISH	Dark gray, Silver gray, Sandy white and Terracotta red

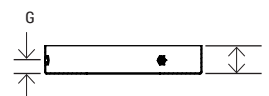
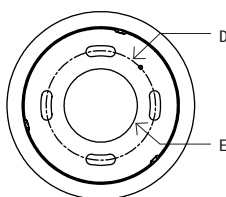
\*Delivered lumen may vary, refer to photometric for full performance data



### DIMENSIONS



Model No.	A	B	C	D	E	F	G	WEIGHT
COB-F20	20"	14.5"	7.6"	4.4"	3"	1.1"	.6"	30 lbs
COB-F29	29"	23.5"	7.6"	4.4"	3"	1.1"	.6"	36 lbs
COB-F40	40"	34.5"	7.6"	4.4"	3"	1.1"	.6"	45 lbs



MODEL NO.	TYPE	PROJECT/DATE
-----------	------	--------------

## ORDERING INFORMATION

\*Additional cost and/or lead time on customized fixtures may apply.

	-		-		-		-		-	
Series	Size	Lumen Package	Voltage	CCT	Light Distribution	Control	Finish			
COB	F20 - (20" OAH height)	7L - (750LM - TS only) 3L - (300LM - TA only) Custom*	U - (120-277V)	27K - (2700K)	TS - (Symmetric 360°) TA - (Asymmetric 180°)	C1 - (ON & Off 0-10V dimmable driver)	DG - (Dark Gray)			
	30K - (3000K)			SG - (Silver Gray)						
	35K - (3500K)			SW - (Sandy White)						
	F29 - (29" OAH height)			40K - (4000K)			TR* - (Terracotta Red)			
	F40 - (40" OAH height)			AMK - (Amber Limited Wavelength 595nm*)						
							*(Made to Order)			



## \*Accessories

RPCOB-H8/4L-U-xxK-TS/TA-DG - Head replacement part

BR-ANC - Stainless steel 4 anchors set for Coby

\*Available accessories sold separately



BR-ANC

Anchor base mounting kit

## SPECIFICATIONS

## CONSTRUCTION

Natural pre-cast concrete with proprietary mix material of cement, stones and aggregates with stainless steel base, screws and glass lens rated for marine grade outdoor environment.

## FINISH

Natural concrete and stone mix finish available in dark gray, silver gray and sandy white, highly resistant to rust and decay caused by environmental factors.

## OPTICS/DIFFUSER

Glass diffused lens with either symmetric or asymmetric distribution.

## ELECTRICAL

Long life LED system, Outdoor rated LED driver that accommodates input voltages of 120-277Vac at 50/60Hz with 0-10v dimming control function.

## MOUNTING

New construction with anchor based mounting (anchors sold separately) or wedge anchor mount on existing concrete.

## VALIDATIONS

ETL and cETL wet location listed, IP65 and IK08 rated, Dark sky compliant, FCC compliant, RoHS compliant