

MODEL NO.	TYPE	PROJECT/DATE
-----------	------	--------------

KEY FEATURES

- Outdoor gooseneck fixture delivering up to 3,300 lumens at 30W.
- Multi-volt (120–277V) with optional photocell for dusk-to-dawn use.
- Durable die-cast aluminum housing, powder-coat finish, wet-location rated.

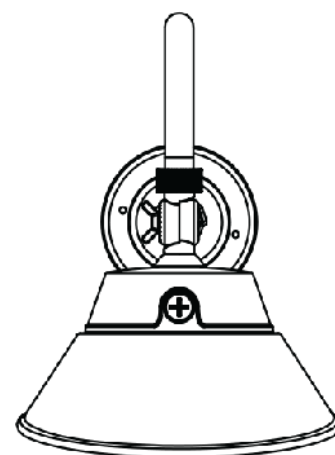
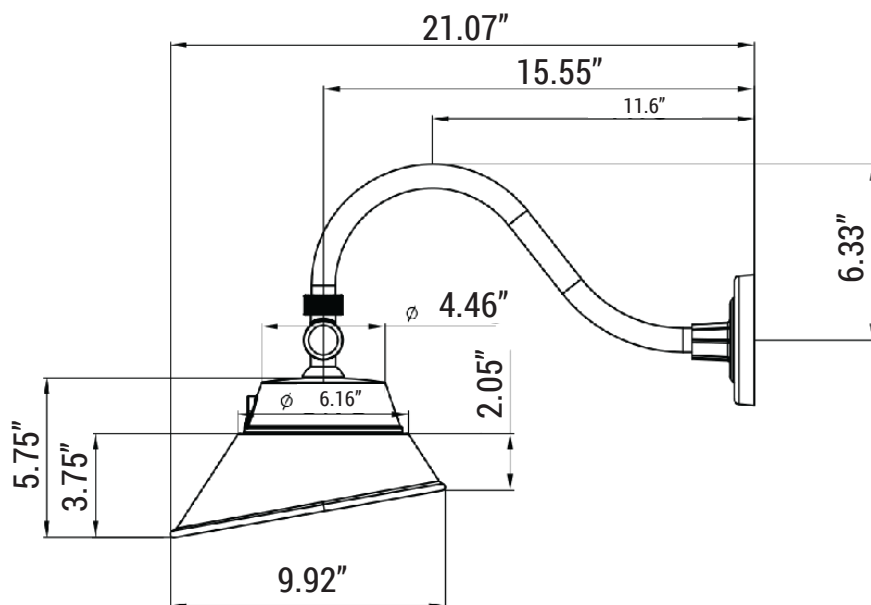
TECHNICAL SUMMARY

WATTAGE	30W/20W/15W
LUMEN/EFFICACY *	3300/2100/1800LM; 100LM/W
INPUT VOLTAGE	120-277Vac
AVAILABLE CCT/CRI	30K/40K/50K Color Changeable; 70+CRI
CONTROL	On/off, Embedded Photocell Optional
VALIDATION	cETL & ETL wet location listed, RoHS, FCC
LIFETIME	L70>50,000 HRS, 5 YR Warranty
OPERATION TEMP	-22°F ~ 113°F
FINISH	Black, White, Custom

*Delivered lumen may vary, refer to photometric for full performance data

**DIMENSIONS**

Weight: 2.8lbs



Front View

MODEL NO.	TYPE	PROJECT/DATE
-----------	------	--------------

ORDERING INFORMATION

-

-

-

-

-

Series	Lumen Package	Voltage	CCT	Control	Finish
GNA - (Gooseneck Angle Shade)	33LC - (3300/2100/1800LM; 100LM/W)	U - (120 - 277Vac)	CC - (30K/40K/50K; Color Changeable)	C1 - (On/Off) C2 - On/Off (Photocell)*	BK - (Black) WH - (White) RAL - (Custom)*

*Additional cost and/or lead time on customized fixtures may apply. Customized fixtures can not be returned.

SPECIFICATIONS

CONSTRUCTION

Heavy-duty die cast aluminum housing.

ELECTRICAL

Class 2, Constant Current, 100-277Vac

FINISH

Rust and corrosion proof with polyester coating, available in Black, White and Custom finish.

VALIDATIONS

cETL & ETL wet location certified. RoHS compliant, FCC.

OPTICS

High light transmittance polycarbonate with UV protection.