

ENGAGE SERIES

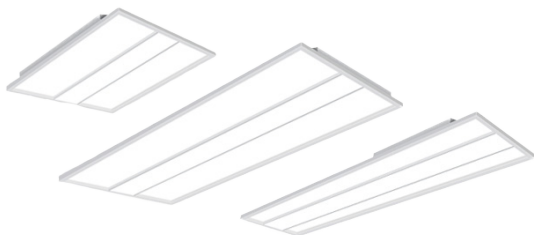
BACK-LIT VOLUMETRIC PANEL

Spitzer
LIGHTING

INSTALLATION MANUAL

PRODUCT PARAMETER

INPUT VOLTAGE	110 - 277V
RATING	DAMP LOCATION
WORKING TEMP	-4°F ~ 104°F



SAFETY INFORMATION

BE SURE THE POWER IS OFF! RISK OF ELECTRICAL SHOCK: Always use the switch to power off. Do not perform any operations while this unit is powered on. The electrical system you want to connect the device to must be grounded. Read the instructions before using or powering this device. The safety instructions must remain with the unit in case of transfer. Any damage to the device linked to an inappropriate use is excluded from support by the warranty. Before connecting, make sure that the current and voltage are compatible with this device. We highly recommend that all installations are made by QUALIFIED ELECTRICIAN. We are NOT responsible by any means for the use or misuse of the following information. We are NOT responsible in whole or part for any harm or damage that may or may not be caused. We reserve the right to revise the components of any product, due to part availability or change ETL, CUL, UL standards without assuming any obligation or liability to modify any products previously manufactured and without notice. These instructions do not cover all details of variations in equipment, nor do they provide every possible contingency to be met. Turn off / unplug power when installing or service device.

PRE - INSTALLATION

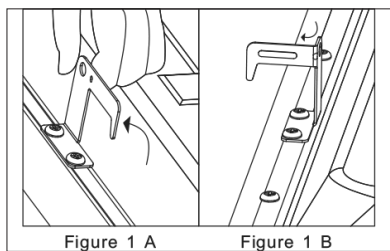
- Consult a qualified electrician to ensure correct branch circuit conductor.
- The product should be installed and operated by a qualified electrician or technician in accordance with relevant local codes.
- Risk of the electric shock. Ensure that main power source is off when wiring or soldering the sections of the product.
- Before installing this fixture or doing any maintenance, make sure to turn off the power supply at the circuit breaker or fuse box.
- Check to make sure that all fixture connections have been properly made and the fixture is grounded to avoid potential electrical shock.
- Designed for use in AC 110-277V/110-347V, 50/60Hz, protected circuit.

INCLUDED

- LED Luminaire
- Installation instruction

INSTALLATION (Caution: Before beginning installation turn off the circuit breaker and light switch)

STEP 1

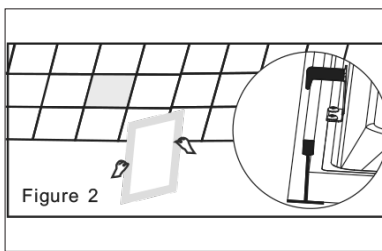


Bend J-Hook by 45° making it vertical to the rear cover of LED luminaire (Figure 1A).

Bend the top part of J-Hook y 90° (Figure 1B).

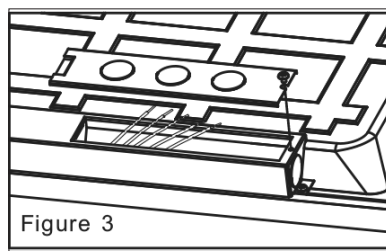
Repeat 'step 1' to other J-Hooks.

STEP 2



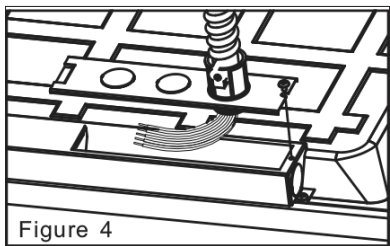
Turn off power, remove the ceiling panel, then place LED luminaire into the T-bar, ensure the LED luminaire is attached to the ceiling. (Figure 2) (J-Hook for positioning only)

STEP 3



Open the driver box (Figure 3)
(trade size of conduit: 22.2mm dia)

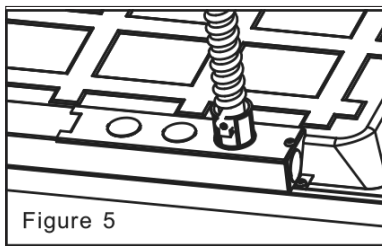
STEP 4



1. Connect AC Wires
Input L connects to the black wire of the luminaire, N connects to the white wire, the ground connects to the green wire

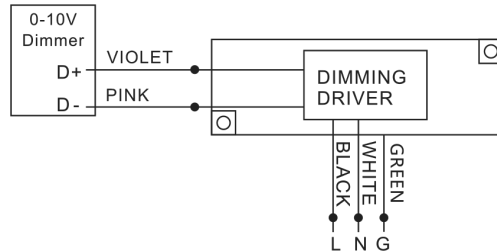
2. Connect Dimmer
Compatible with 0-10V dimmer. The driver VIOLET (D+) to the dimmer+, and the driver PINK (D-) to the dimmer

STEP 5



Close the driver box and screw (Figure 5)

WIRING DIAGRAM



EM WIRING DIAGRAM

