

LED DISK LIGHT

6" LED MOTION SENSOR CEILING LIGHT - DSKL6-15WCC-M

INSTALLATION MANUAL

PRODUCT PARAMETER

INPUT VOLTAGE	120V
FEATURE	MOTION SENSOR
MATERIAL	ALUMINUM ALLOY



5-YEAR LIMITED WARRANTY

LIMITED WARRANTY: This fixture is warranted to be free from defects in workmanship and material for up to 5-years. Based upon reasonable household usages, when used in accordance with package and included instructions. If this fixture does not last for the time period guaranteed, manufacture will send you a replacement fixture upon receipt of the returned fixture, register receipt, and proof of purchase. To contact us, please email us at info@spitzerlighting.com to find out how to return the fixture. We are committed to making high quality products. Returning the fixture will help us monitor and further improve product quality. This replacement is the sole remedy available, and LIABILITY FOR INCIDENTAL OR CONSEQUENTIAL DAMAGES IS HEREBY EXPRESSLY EXCLUDED.

SAFETY INFORMATION

BE SURE THE POWER IS OFF! RISK OF ELECTRICAL SHOCK: Always use the switch to power off. Do not perform any operations while this unit is powered on. The electrical system you want to connect the device to must be grounded. Read the instructions before using or powering this device. The safety instructions must remain with the unit in case of transfer. Any damage to the device linked to an inappropriate use is excluded from support by the warranty. Before connecting, make sure that the current and voltage are compatible with this device. We highly recommend that all installations are made by QUALIFIED ELECTRICIAN. We are NOT responsible by any means for the use or misuse of the following information. We are NOT responsible in whole or part for any harm or damage that may or may not be caused. We reserve the right to revise the components of any product, due to part availability or change ETL, CUL, UL standards without assuming any obligation or liability to modify any products previously manufactured and without notice. These instructions do not cover all details of variations in equipment, nor do they provide every possible contingency to be met. Turn off / unplug power when installing or service device.

WARNING

WARNING: Read all safety precautions and installation instructions carefully before installing or servicing this fixture. Failure to comply with these instructions could result in a potentially fatal electric shock, fire, and/or property damage.

- Read all instructions
- Risk of fire. Supply conductors (power wires) connecting the fixture must be rated minimum 90°C. If uncertain, consult an electrician.
- Risk of Electric Shock. Disconnect power fuse or circuit breaker before installing or servicing. If not qualified, consult an electrician.
- Properly ground electrical enclosure. IT IS IMPERATIVE THAT THE OUTLET BOX BE PROPERLY GROUNDED.
- DO NOT REVERSE THE HOT AND NEUTRAL CONNECTIONS, OTHERWISE SAFETY WILL BE COMPROMISED.
- This integrated LED Fixture has no lamp/bulb to replace.

FCC WARNING

WARNING: Changes or modifications to this unit not expressly approved by the party responsible for compliance could void the user authority to operate the equipment.

NOTES: This equipment has been tested and found to comply with the limits for a Class B digital device, pursuant to Part 15 of the FCC Rules. These limits are designed to provide reasonable protection against harmful interference in a residential installation. This equipment generates, uses and can radiate radio frequency energy and, if not installed and used in accordance with the instructions, may cause harmful interference to radio communications. However, there is no guarantee that interference will not occur in a particular installation. If this equipment does cause harmful interference to radio or television reception, which can be determined by turning the equipment off and on, the user is encouraged to try to correct the interference by one or more of the following measures:

- Reorient or relocate the receiving antenna.
- Increase the separation between the equipment and receiver.
- Connect the equipment into an outlet on a circuit different from that to which the receiver is connected.
- Consult the dealer or an experienced radio/TV technician for help.

TROUBLE SHOOTING

- CHECK THAT LINE VOLTAGE AT FIXTURE IS CORRECT.
- ENSURE THAT THERE IS VOLTAGE AT LAMP FIXTURE WIRES. IF THERE IS NO VOLTAGE, THEN CHECK ALL CONNECTIONS.
- CHECK THAT FIXTURE IS GROUNDED PROPERLY.

IF FIXTURE DOES NOT LIGHT:

- CHECK SWITCH TO ENSURE THAT THERE ARE NO DEFECTS.
- CHECK FUSE/CIRCUIT BREAKER FOR TRIPS, THEN CHECK WIRING CONNECTIONS.

CLEANING AND MAINTENANCE

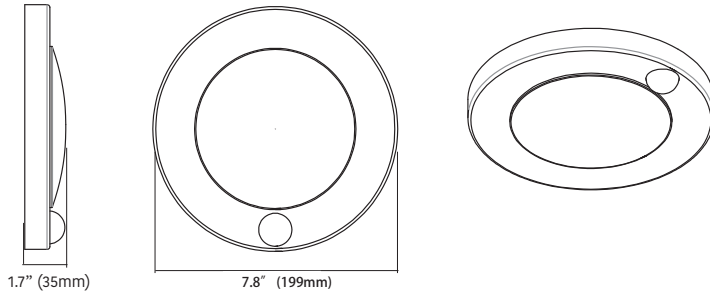
CAUTION: Before attempting to clean the fixture, disconnect the power to the fixture by turning the breaker off or removing the fuse from the fuse box. This LED light fixture is made from quality materials that will last many years with minimum care and maintenance. You may want to clean the fixture with a soft cloth periodically. To maintain the best appearance of the fixture, do not use cleaners with chemicals, solvents or harsh abrasives. Do not use liquid cleaner on the LEDs, LED driver, or wiring inside the light fixture.

- ENSURE FIXTURE TEMPERATURE IS COOL ENOUGH TO TOUCH. DO NOT CLEAN OR PERFORM MAINTENANCE WHILE FIXTURE IS ENERGIZED.
- CLEAN LENS AND FIXTURE WITH NON-ABRASIVE CLEANING SOLUTION.
- DO NOT OPEN FIXTURE TO CLEAN LED. DO NOT TOUCH LED.
- DO NOT SPRAY LIQUID DIRECTLY ON TO LED, LED DRIVER OR WIRING.

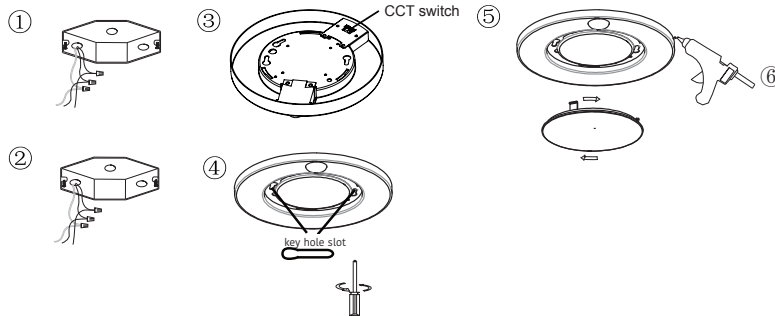
LED DISK LIGHT

6" LED MOTION SENSOR CEILING LIGHT - DSKL6-15WCC-M

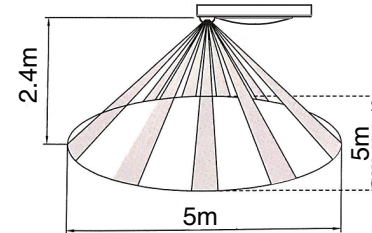
INSTALLATION MANUAL



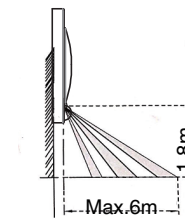
SURFACE MOUNT INSTALLATION



Sensor Detection Range:



Ceiling Mount sensor Detection Range



SIDE VIEW

Wall Mount sensor Detection Range

PLEASE FOLLOW THESE STEPS FOR INSTALLATION

1. Prior to installation . Please install two screws (furnished) into the junction box. Do Not drive screws completely to the end of the junction box.
2. Connect supply wires to wires in fixture wiring box with proper size wire nuts or push wires into "push-in" connector. Connect white to white, black to black, and green or bare copper wire to bare copper wire.
3. Select the color temperature you need by CCT changing switch to warm white, cool white or day light setting.
4. With a Phillips screwdriver, attach the disk light tightly to the 4" octagon j-box. If mounting to a 4" square j-box please use included adapter.
5. Complete the installation by twisting the diffuser on the disk light aluminum enclosure and lock the diffuser in place.
6. The edge of the fixture and the ceiling use waterproof silicone to seal.